

Summary of net loss and/or hang-up by trawler

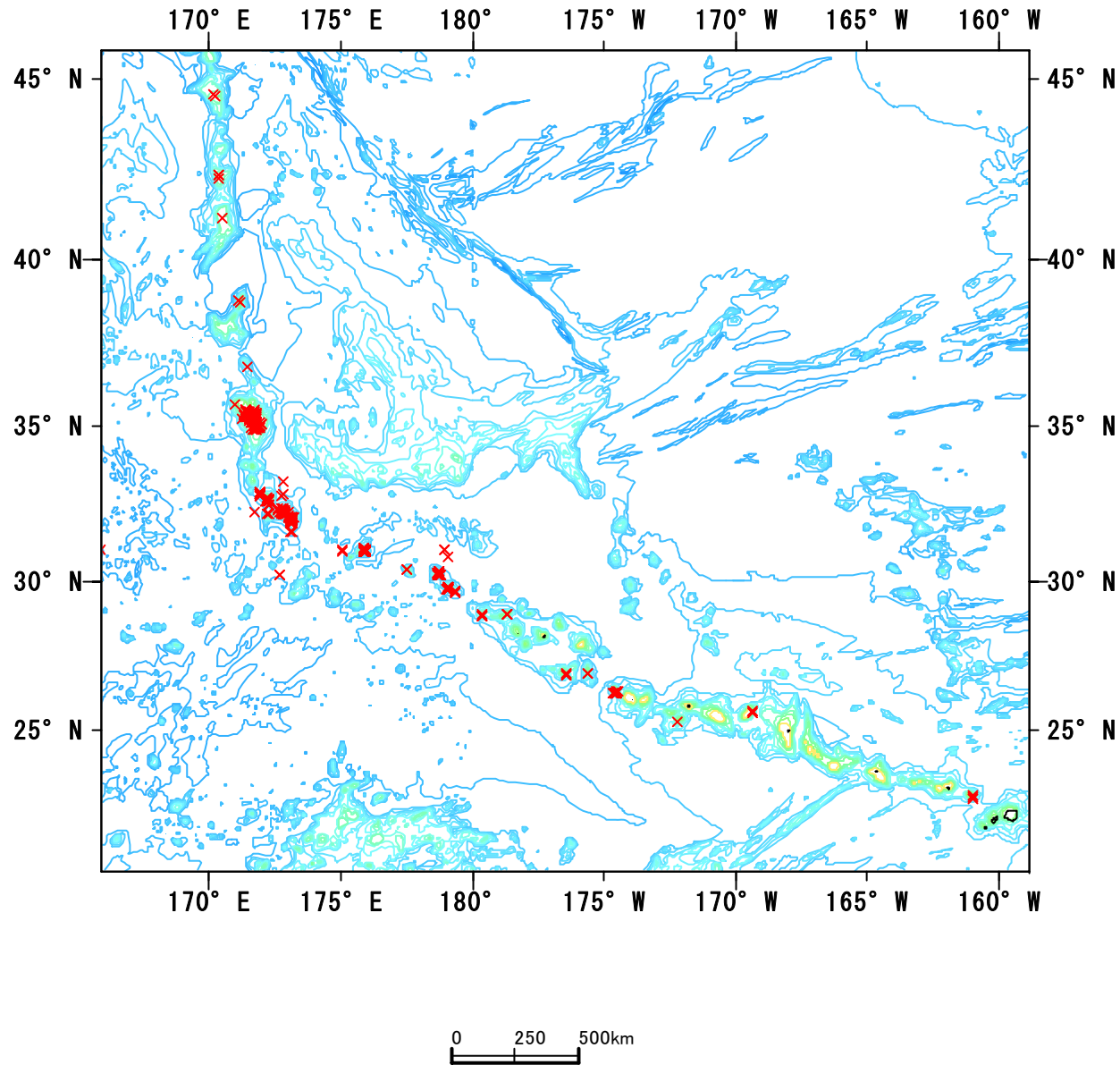
Takashi Yanagimoto

National Research Institute of Far
Seas Fisheries

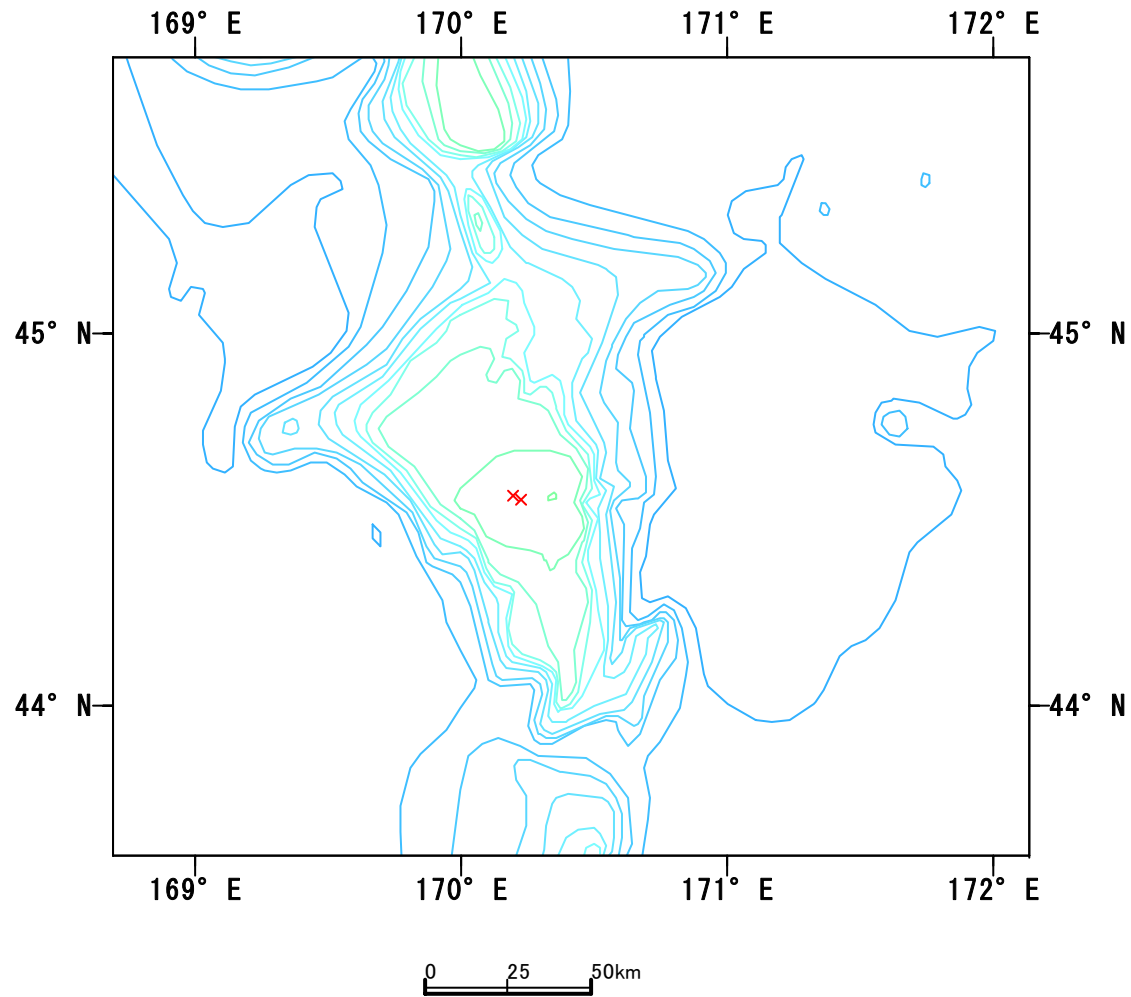
Materials and Methods

- Russian data (SEG4/WP20/R)
- Taiyo Maru No.61 (1972-1973) by JAMARC
- RV Kaiyo Maru (1972-1973) by FRA
- RV Hokuyo Maru (1976-1977) by Hokkaido Fisheries Experiment Station
- Kouhoku Maru No.15 (1976) by Hokkaido Fisheries Experiment Station
- Chiyoki Maru (1976) by Hokkaido Fisheries Experiment Station
- Yahata Maru No.30 (1976) by Aomori Fisheries Experiment Station
- Tomi Maru No.58 (2004-2007) by JAMARC

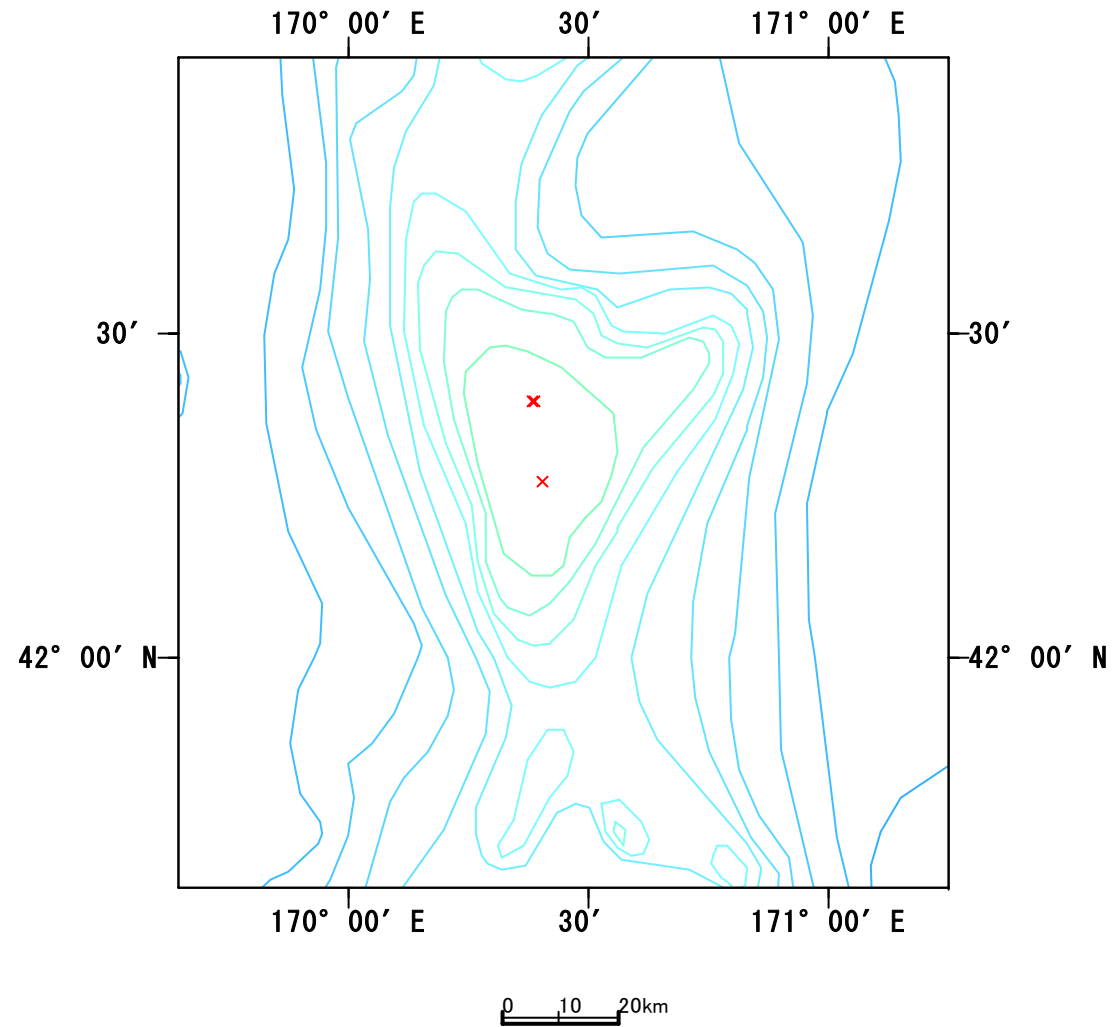
Location of net loss and/or hang-ups



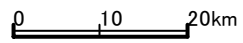
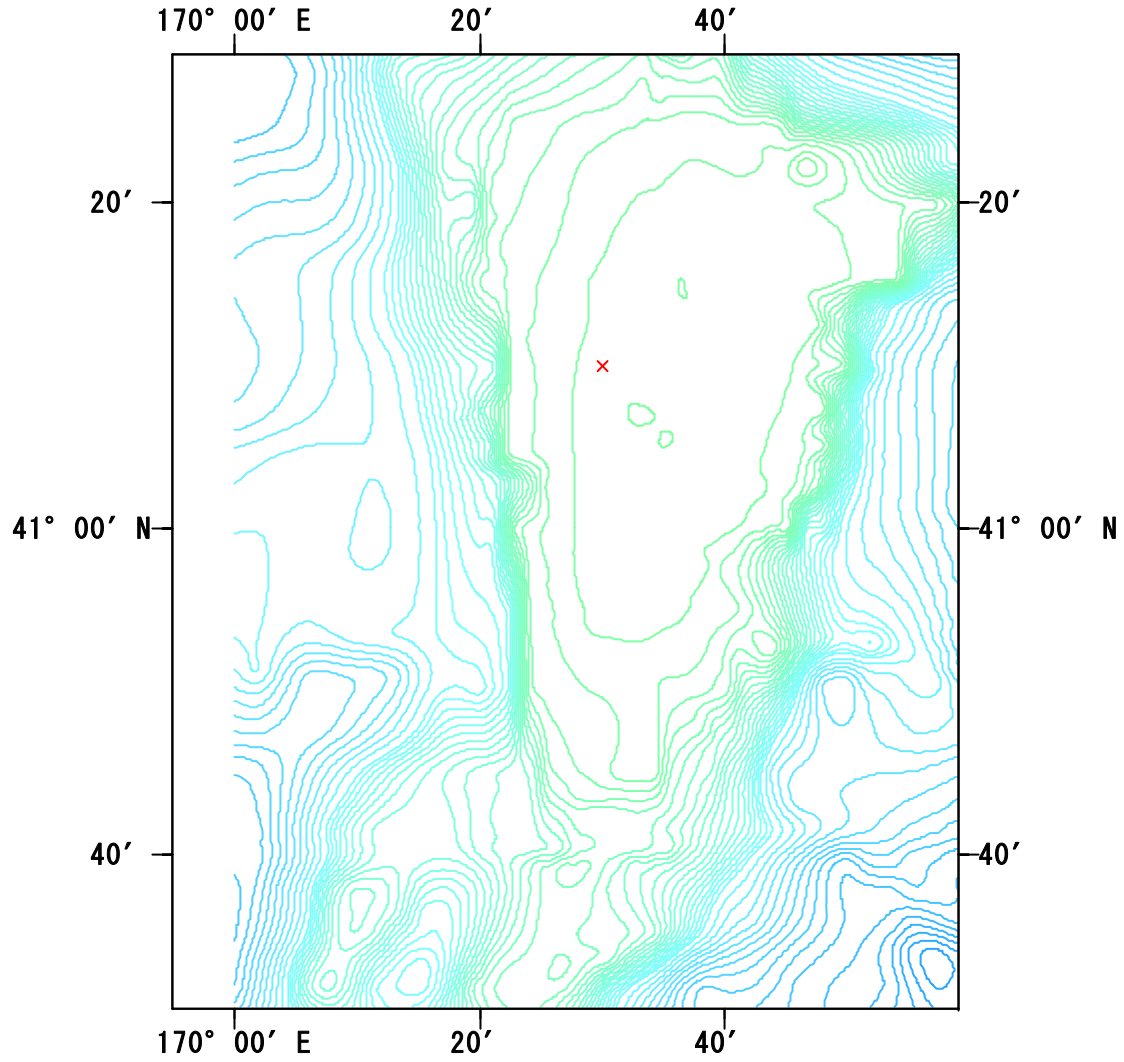
South bank of Suiko



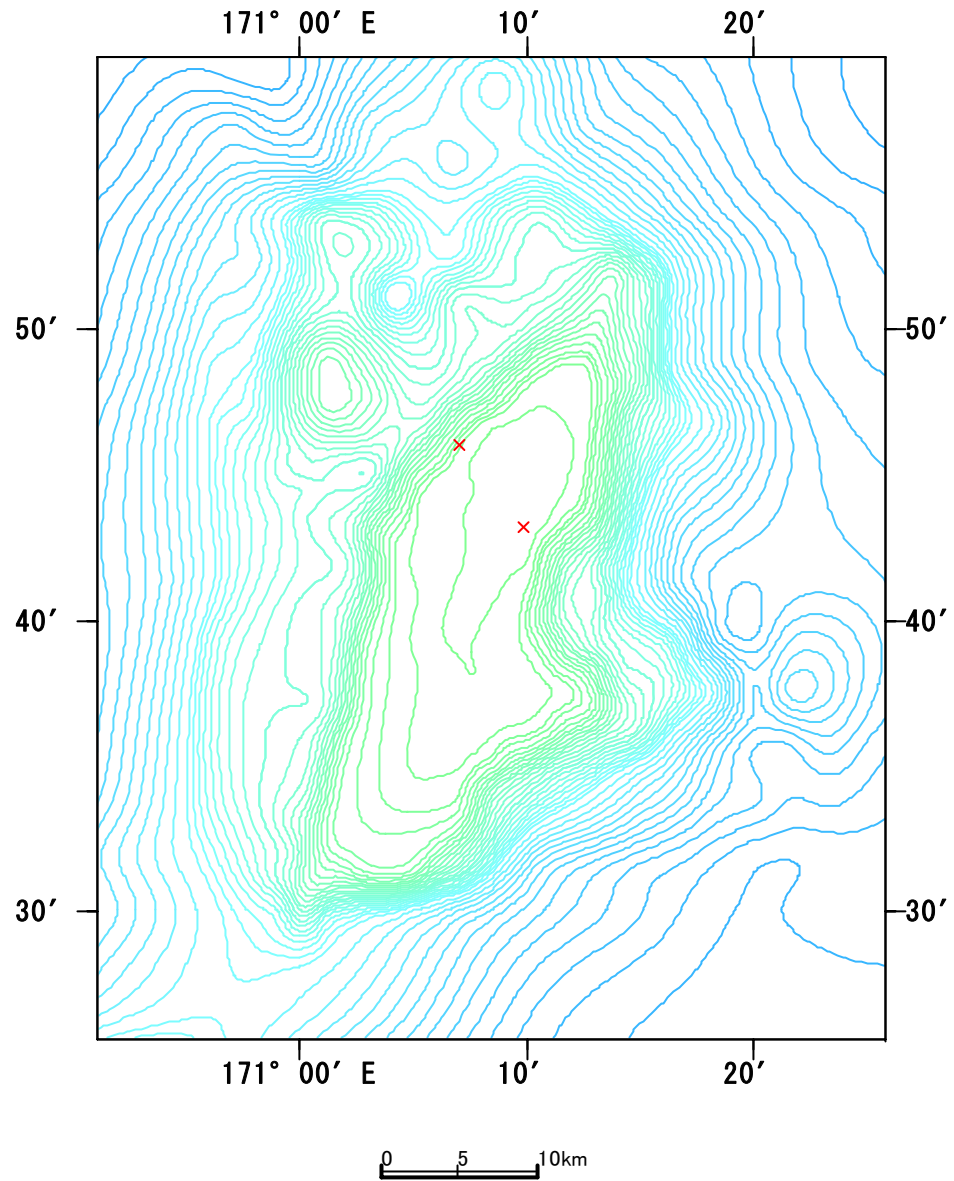
Yomei Seamount



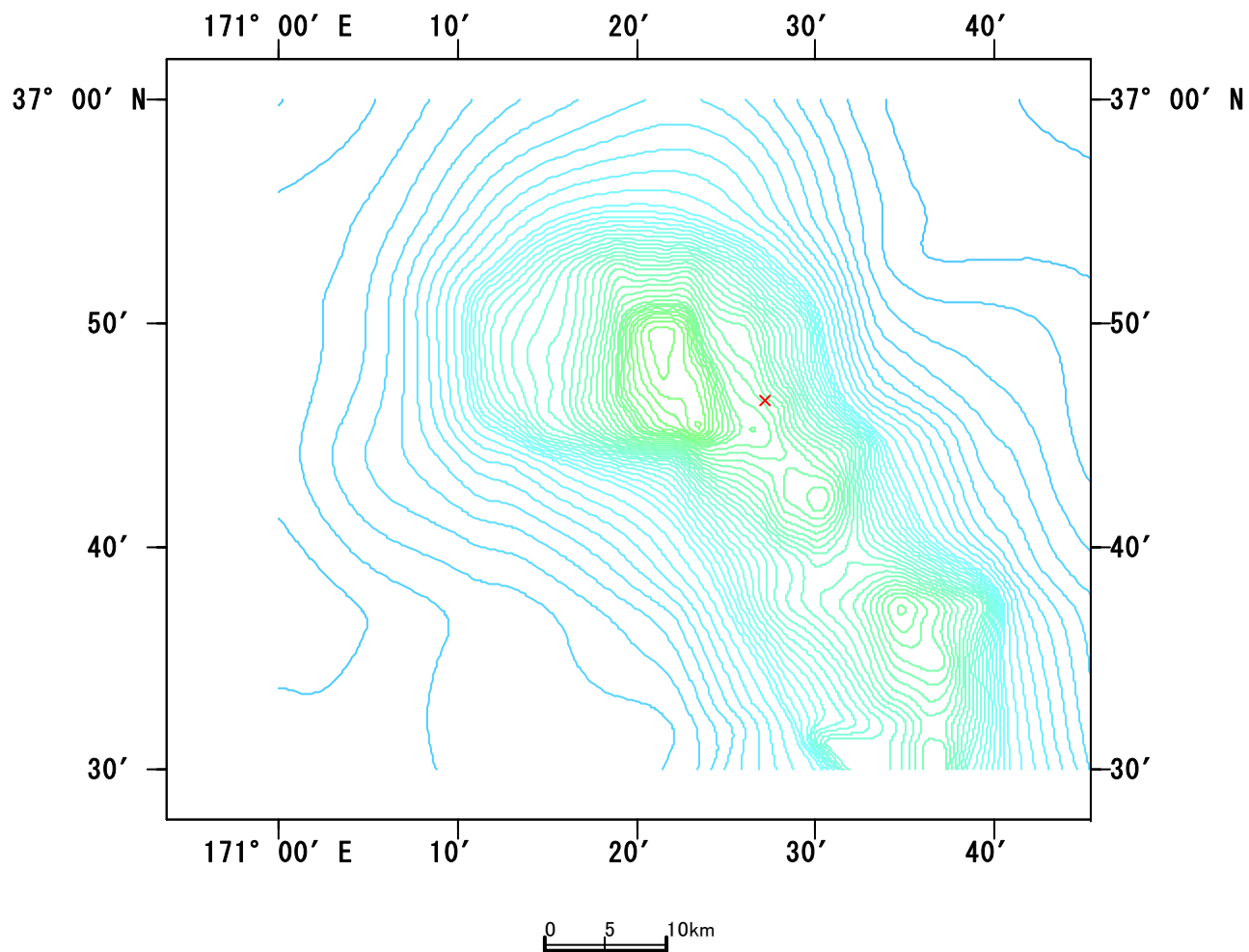
Nintoku



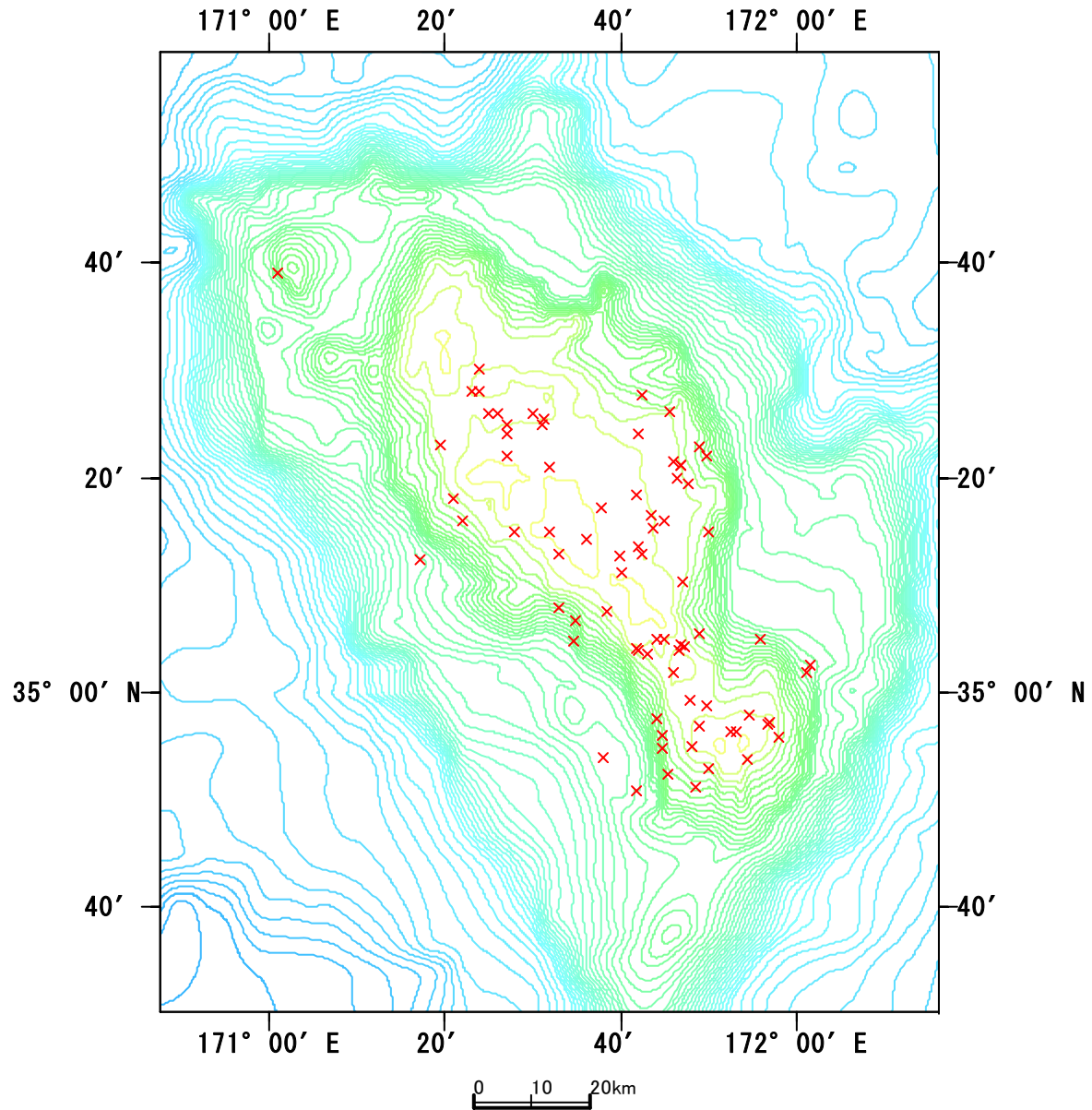
Jingu Seamount



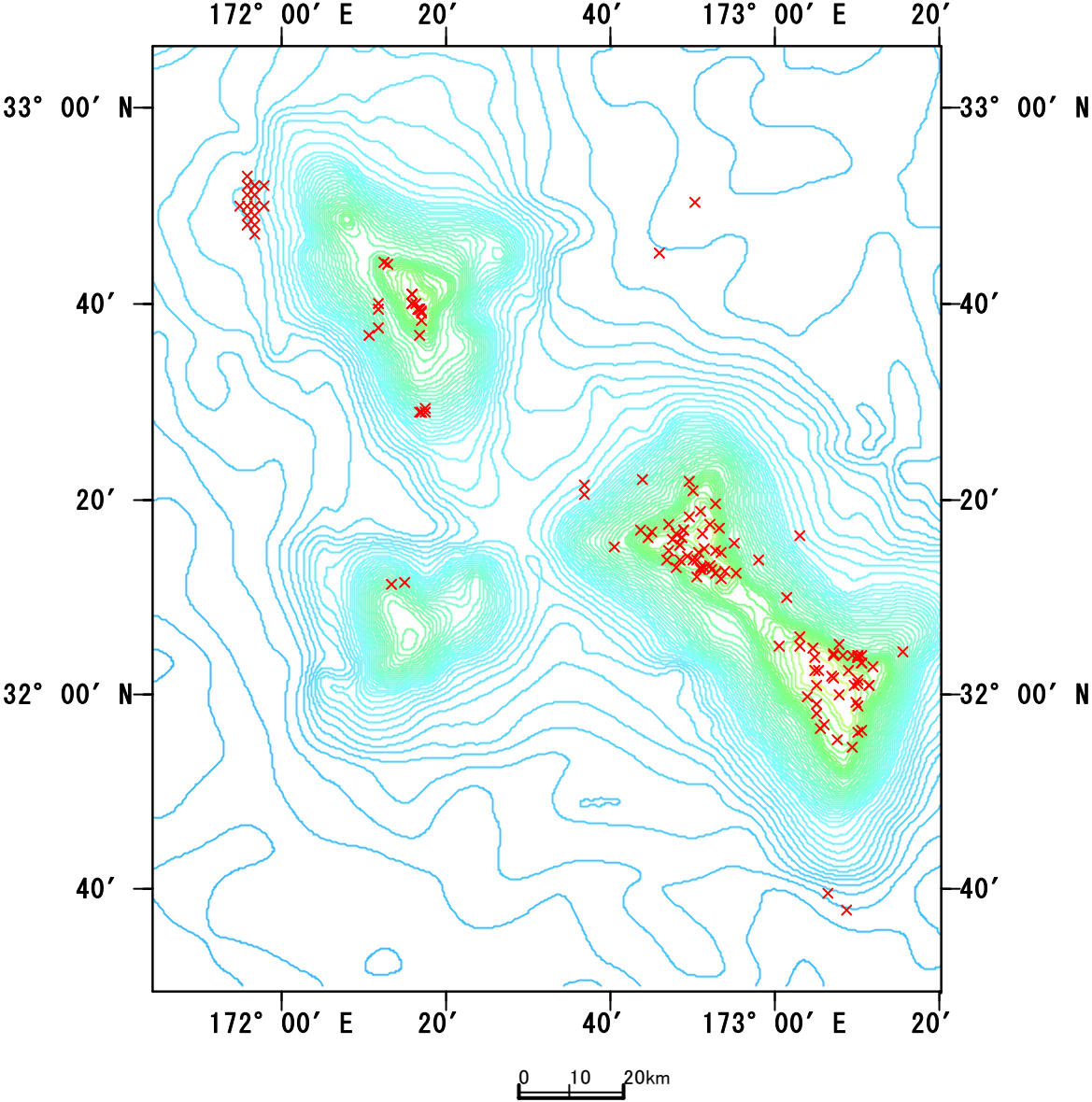
Northern Koko



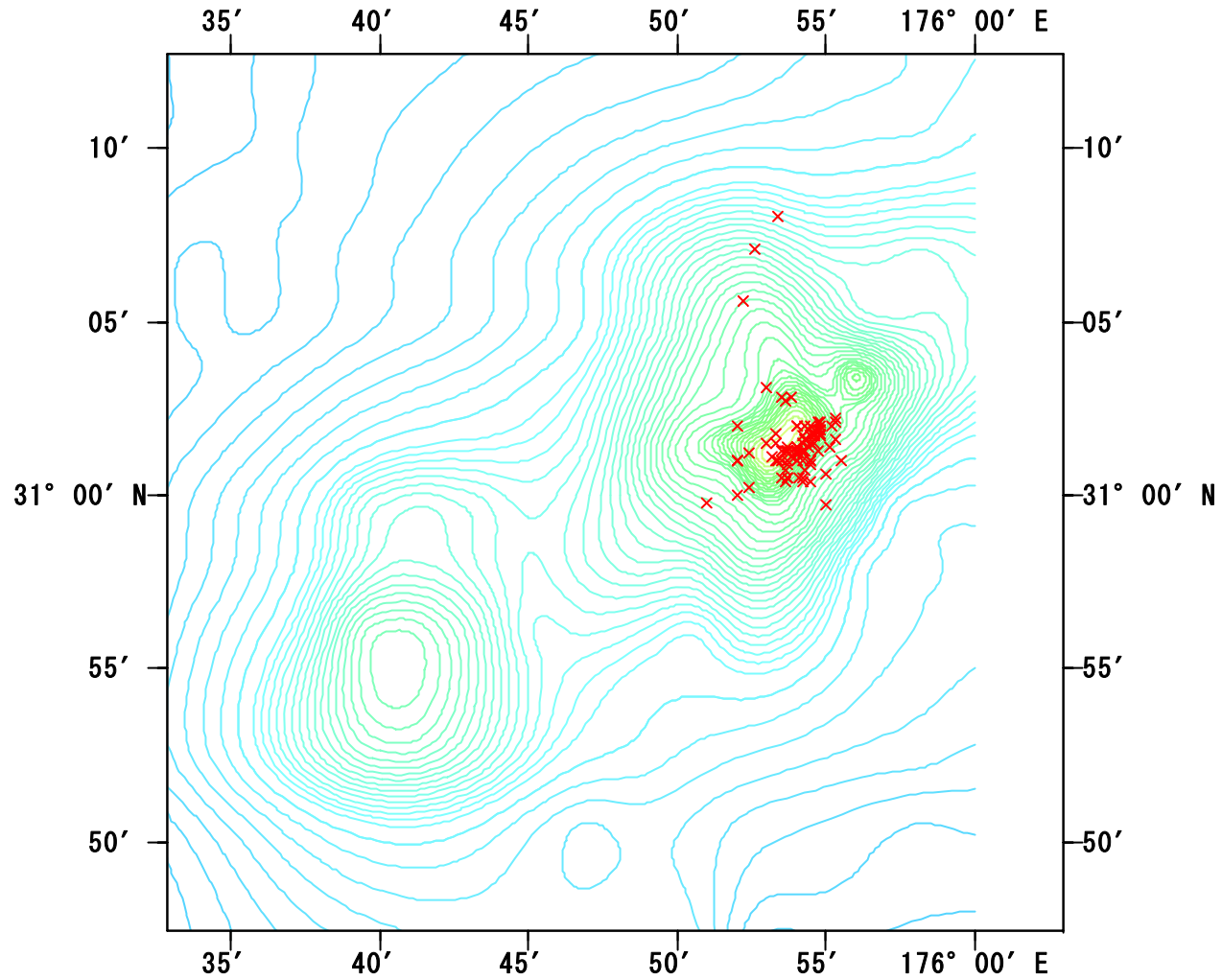
Koko Seamount



Milwaukee Seamount Group

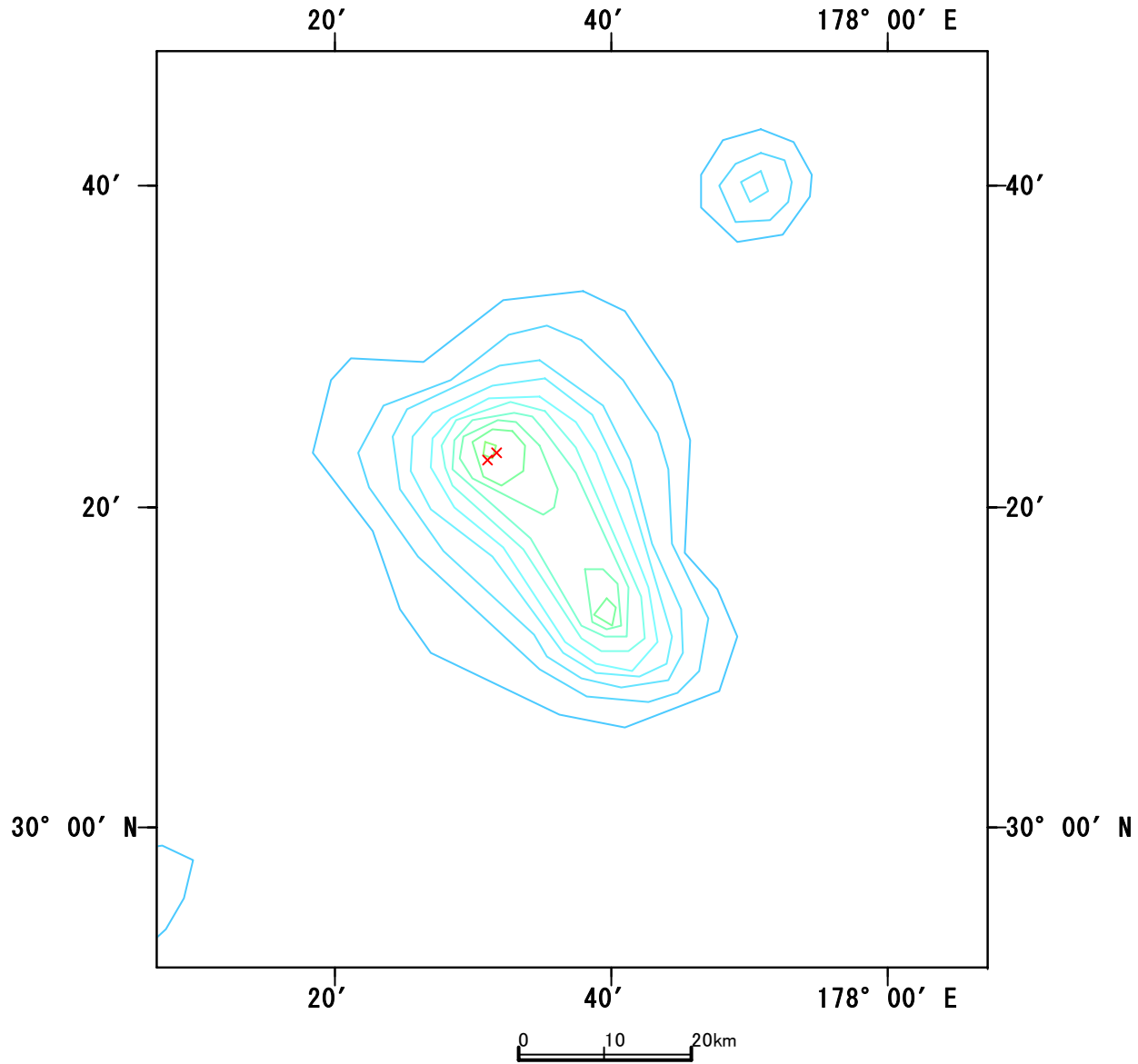


Colahan Seamount

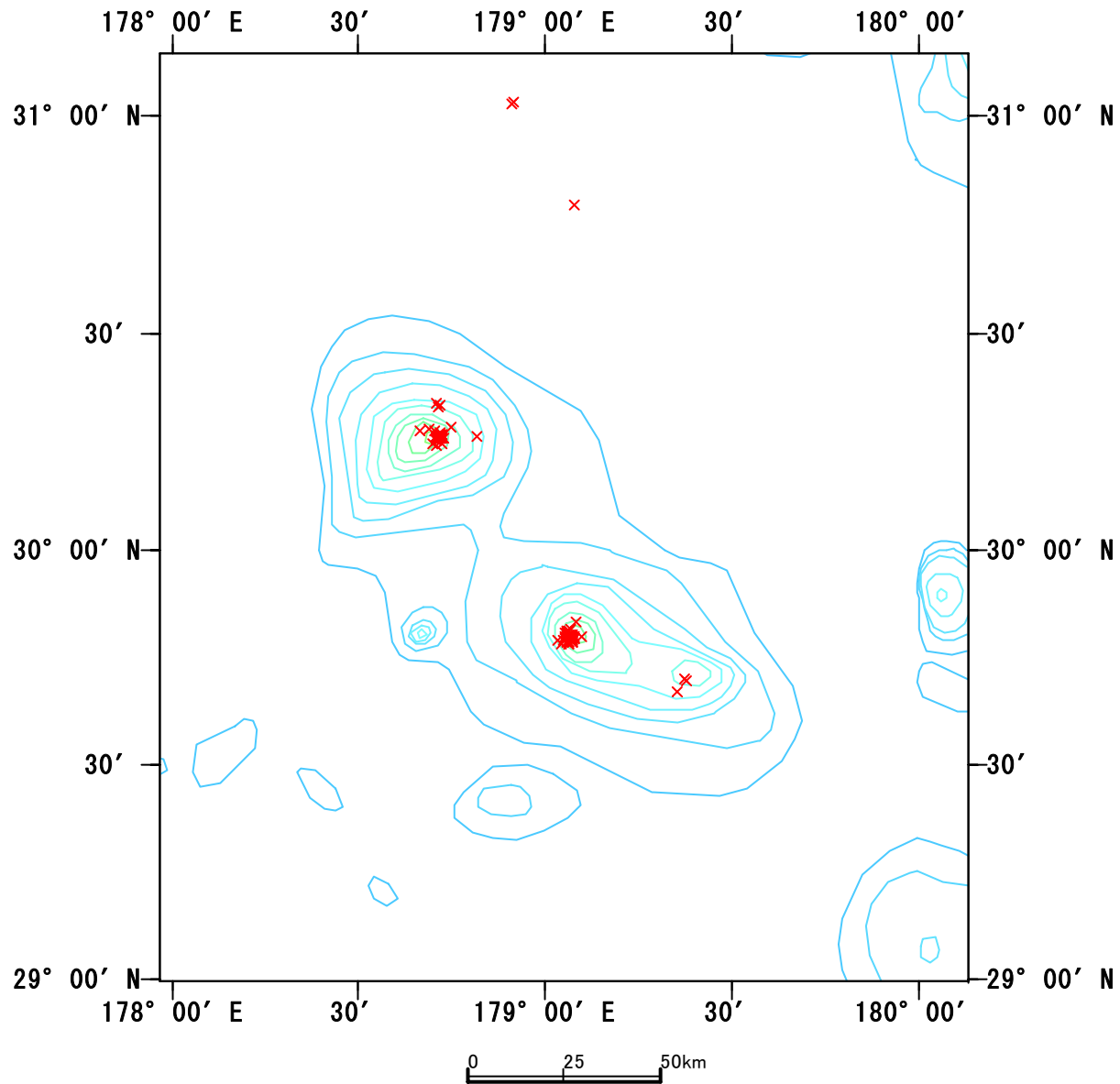


0 5 10km

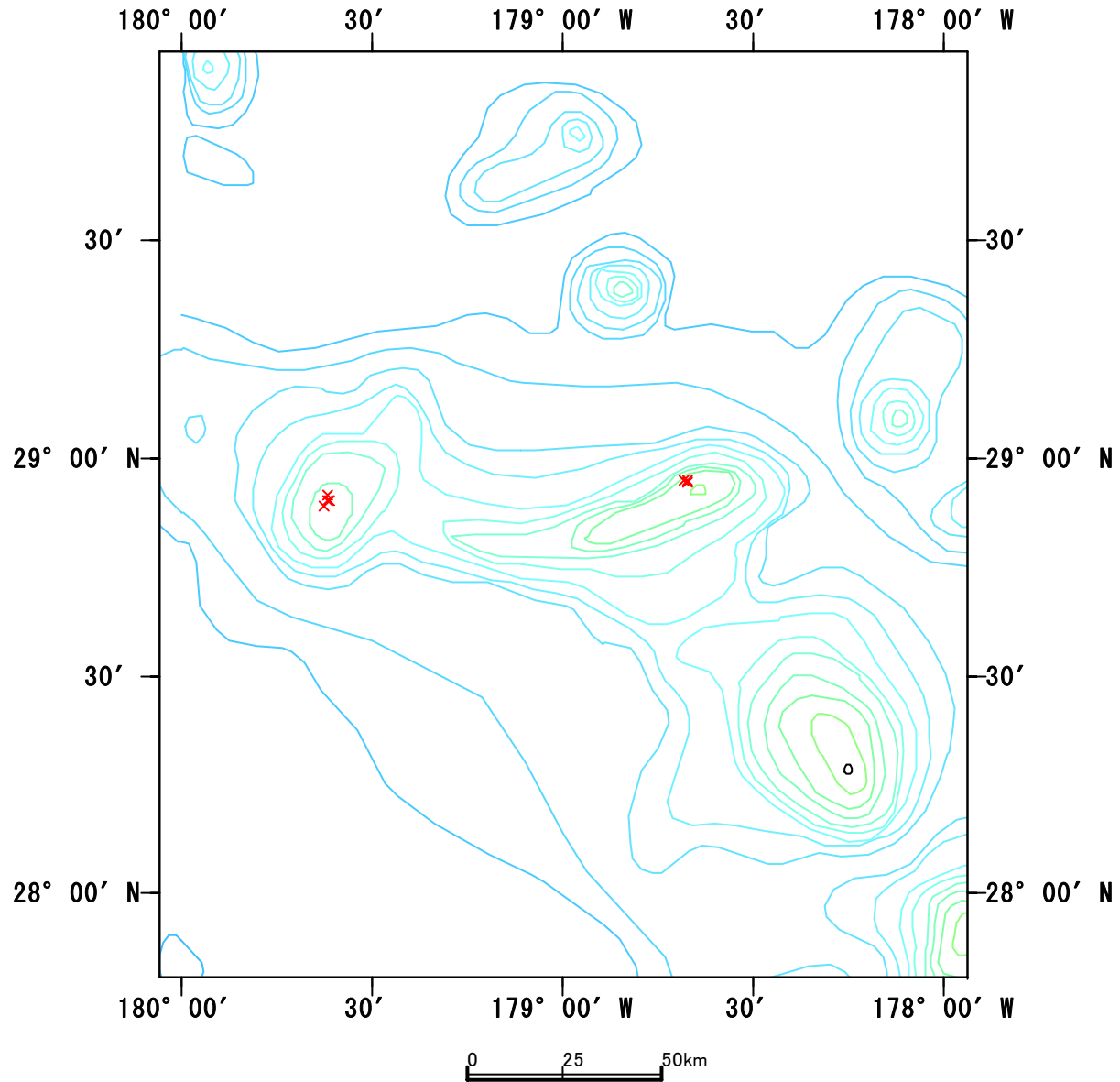
C-H Seamount



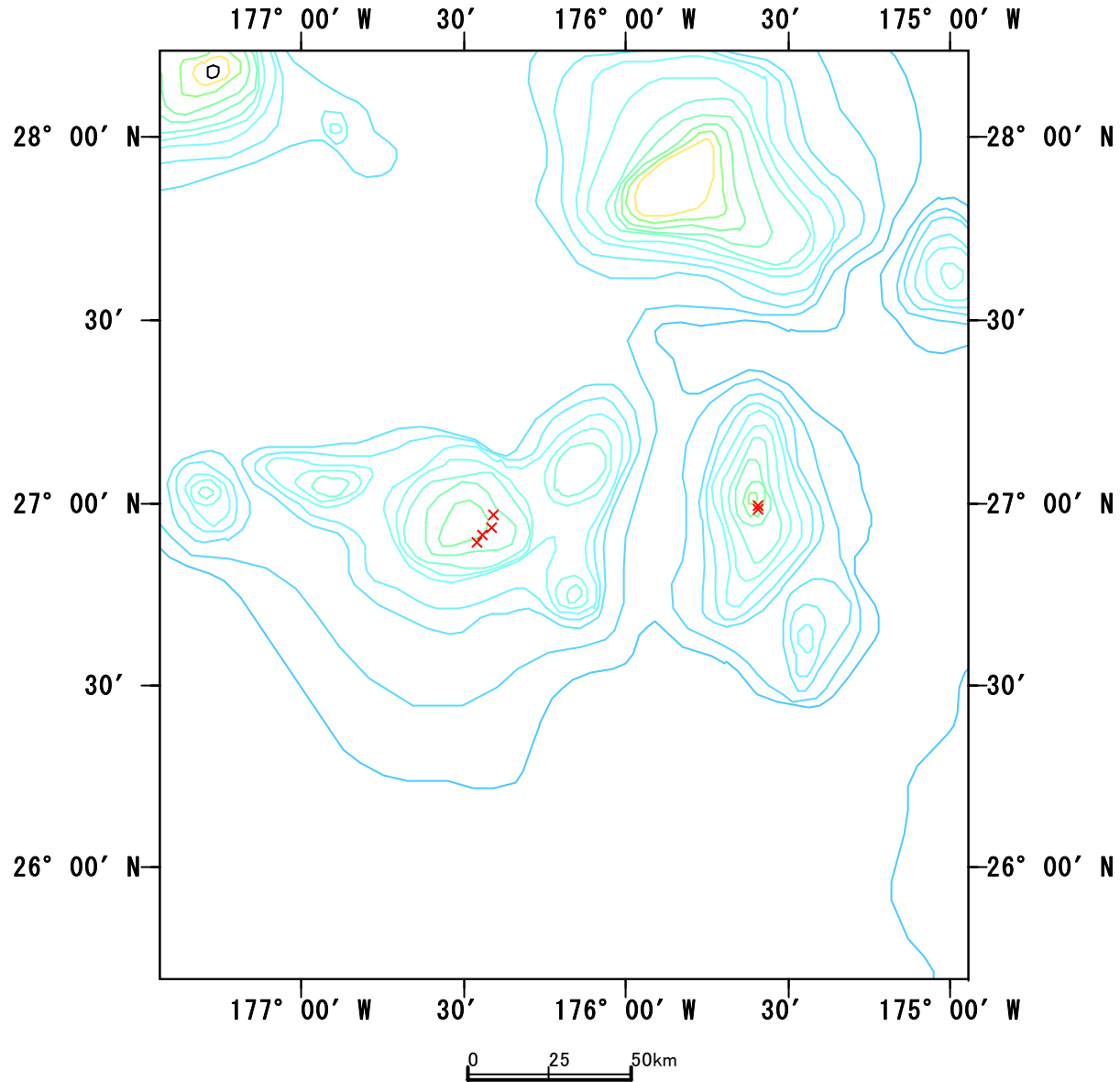
Hancock Seamount



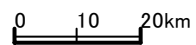
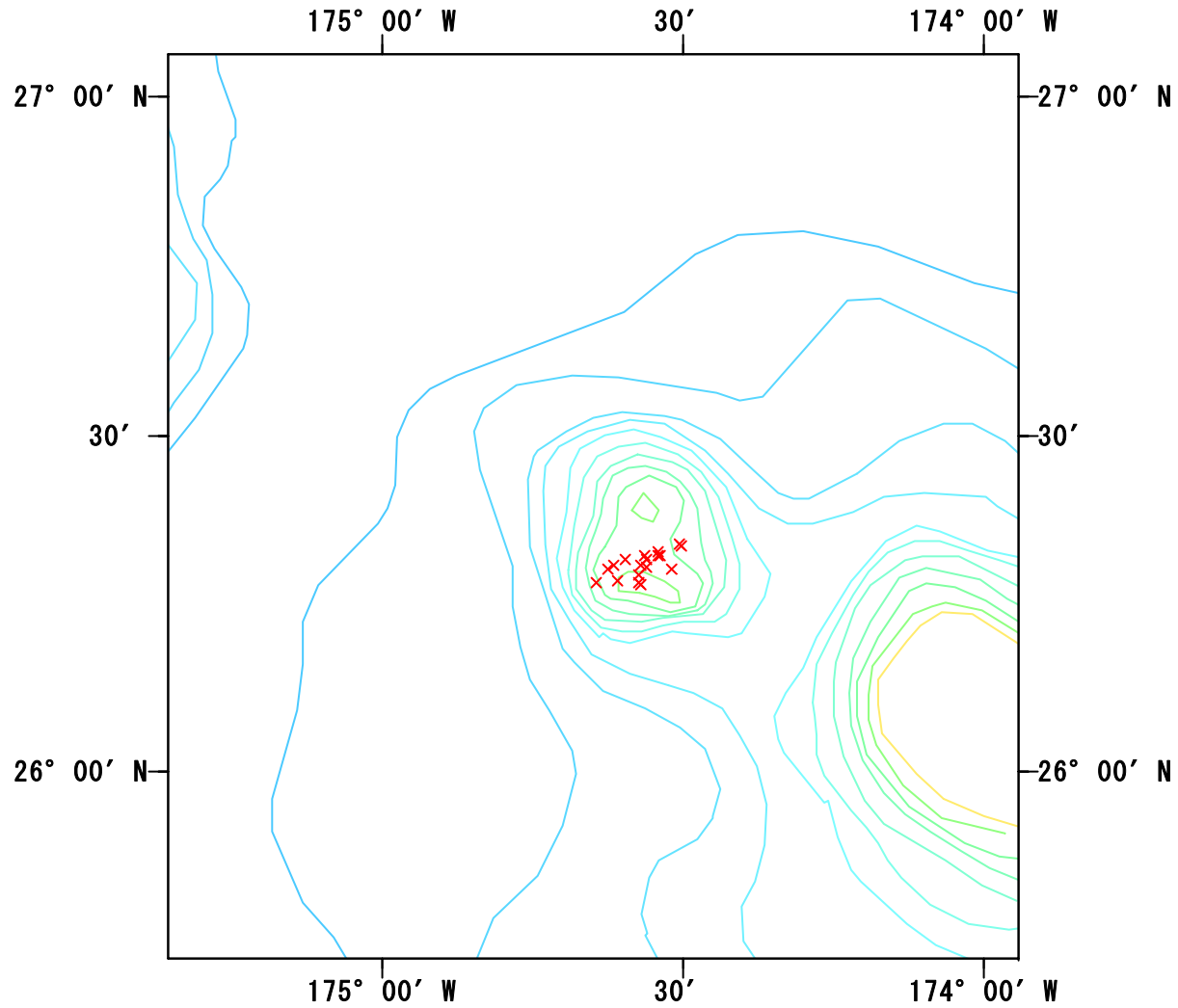
Kurei Bank



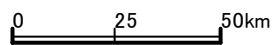
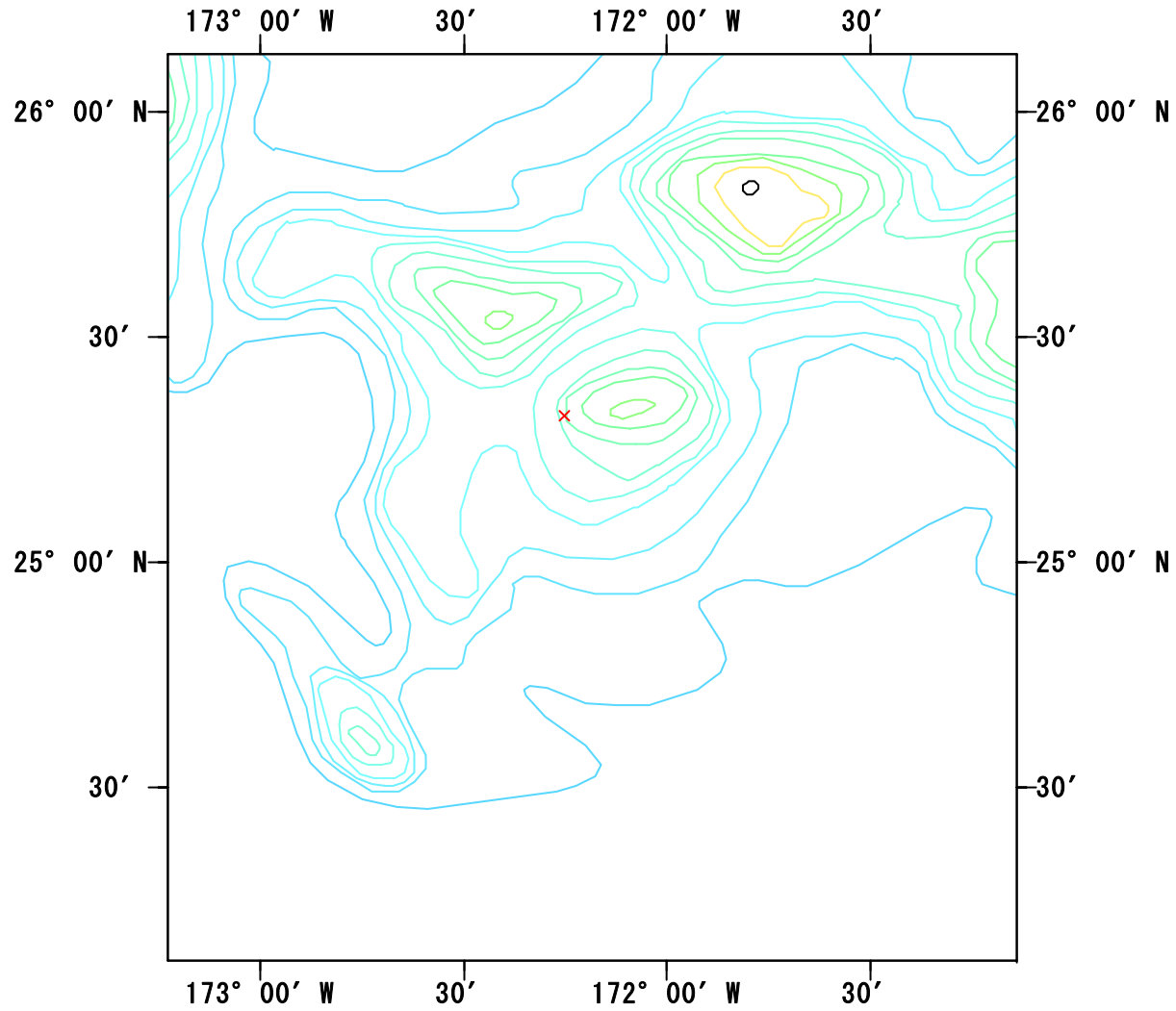
Salmon Banl and East Salmon Bank



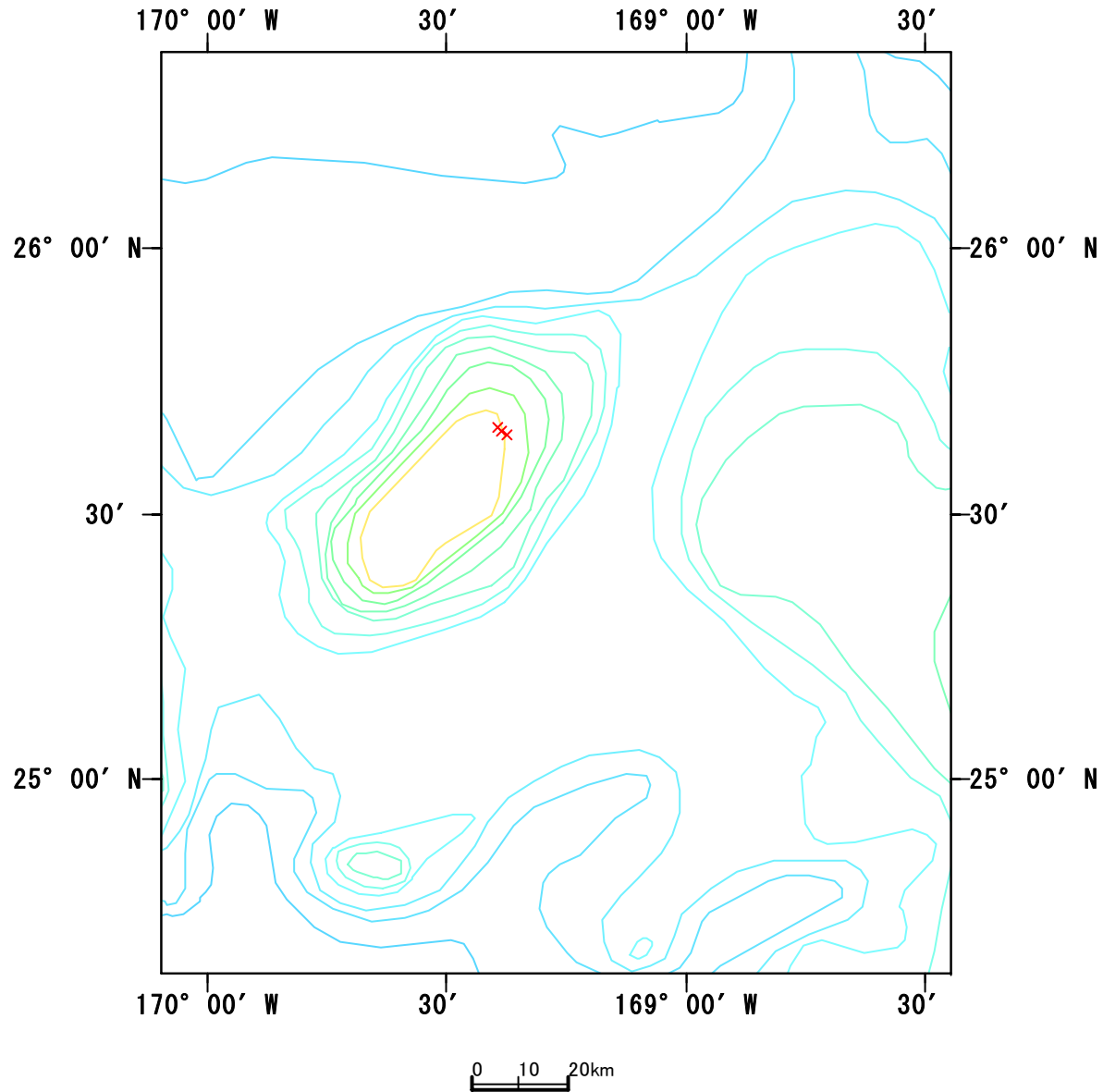
Unsurveyed Bank



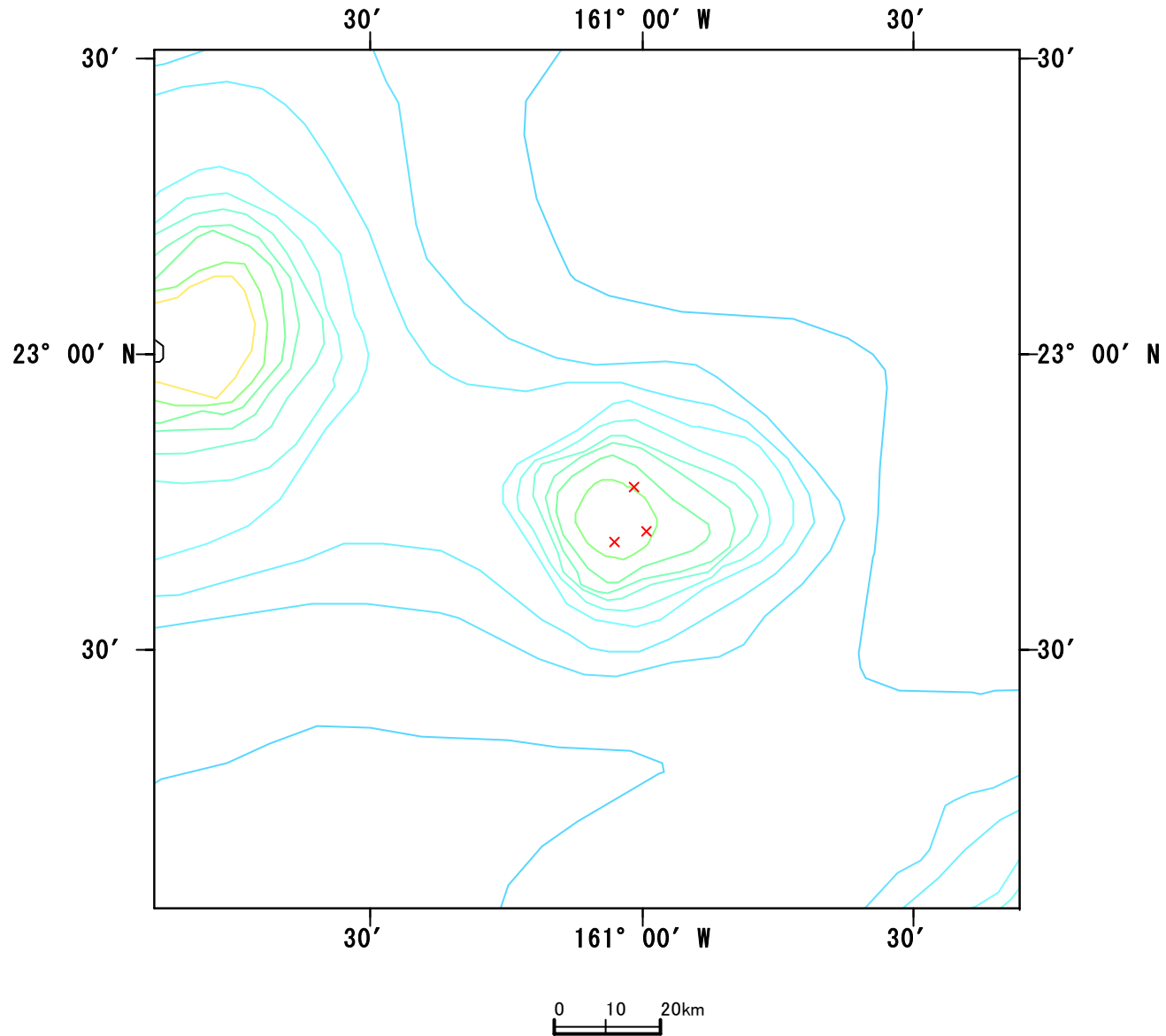
Northampton Bank



Gardner Pinnacles Bank



Nihoa Seamount



Summary of JAMARC survey in 1972

Seamount Name	No. of operation	Hang-ups	Nets damage	Rope cutting	No touch bottom	Others	Accident	Accident (%)
Koko	7		3	2			4	57.14
Yuryaku	4	3	4				4	100
Kammu	153	31	16	13	12	12	54	35.29
Colahan	116	60	21	18	5	9	76	65.52
North bank of Hancock	120	17	11	4	2	3	32	26.67
South bank of Hancock	210	17	6	5	3	3	21	10
Kurei I.	6	2	1				3	50
LADD	5	1					1	20
Salmon Bank	5	4					4	80
East bank from Salmon	6	2					2	33.33
Unsurveryed bank	68	15	5	2			22	32.35
Nihoa I.	12	3	1				3	25
Northampton bank	1	1	1				1	100
Northwestern bank from LADD	1							0
Gardner Pinnacles	2	1					1	50
Raita bank	6	3		2			3	50
Total	722	160	69	46	22	27	231	31.99

From the report of 1972 JAMARC survey

Summary of JAMARC survey in 1973

Seamount	No. of operation	Hang-ups	Nets damage	Rope cutting	No touch bottom	Others	Accident	Accident (%)
Koko	3	1	1			1	2	66.67
Yuryaku	8	5	4	1			5	62.5
Kammu	30	9	6	3		1	10	33.33
Colahan	47	17	1	4	4	2	24	51.06
C-H	3	1	2		1		2	66.67
North bank of Hancock	144	38	16	9	4	6	52	36.11
South bank of Hancock	121	26	9	11	2	5	32	26.45
Unsurveyed bank	2							0
Total	358	97	39	28	11	15	127	35.47

From the report of 1973 JAMARC survey

Summary of net loss and/or hang-ups

	1972 Kaiyo Maru	1972 Taiyo Maru No.61	1973 Kaiyo Maru	1973 Taiyo Maru No.61	1976 Chiyoki Maru	1976 Hokuyou Maru	1976 Yahata Maru No.30	1977 Hokuyo Maru	1977 Kouhoku Maru No.15	2004 Tomi Maru No.58	2005 Tomi Maru No.58	2006 Tomi Maru No.58	2007 Tomi Maru No.58
Jimmu									0/1				
N Suiko									0/1				
S Suiko									2/3				0/1
Showa													0/1
Youmei					3/3								0/1
Nintoku							0/1						0/2
Jingu					1/1				1/1				
Ojin													0/3
N Koko													0/4
Koko		4/7		2/3	20/30	7/16	0/11	4/6	8/16	4/18	0/23	0/34	3/44
Kinmei											0/1	0/2	0/2
Yuryaku		4/4		5/8	1/1		8/16			1/14	0/2	0/7	0/2
Kammu	2/10	54/153		10/30	15/27					2/9	1/43	2/48	0/27
Colahan		76/116		24/47						8/21	0/10	0/10	0/4
C-H				2/3								0/2	0/1
N Hancock		32/120	0/4	52/144									
S Hancock	0/3	21/210	0/7	32/121									
Total	2/13	191/610	0/11	127/356	40/62	7/16	8/28	4/6	11/22	15/62	1/79	2/103	3/92

Upper indicate number of net loss and/or hang-ups.

Lower indicate number of total trawl operations.

Number of net loss and/or hang-ups are decreasing year by year.

Summary

- Net loss and/or hang-ups were observed at many seamounts in 1970'.
- But net loss and/or hang-ups were decreased recently.
- It was considered that fisherman changed fishing ground to avoid net loss and hang-ups.
- And/or It was considered that fishing gear and method changed year by year, therefore net loss and hang-ups decreased.
- And/or it was considered that bottom of fishing ground are getting smooth year by year.

Country	Vessel Name	Type	Lat1	Lat2	Lat3	Long1	Long2	Long3	Fisheries	Catch	Year	Month	Day
Russia		BT	30	19.8	N	178	42.9	E	Y		1969	5	3
Russia		BT	30	20.3	N	178	42.5	E	N		1969	5	3
Russia		BT	29	40.3	N	179	21.2	E	Y		1969	5	5
Russia		MW	29	41.9	N	179	22.6	E	N		1970	8	18
Russia		MW	29	42	N	179	22.3	E	N		1970	8	18
Russia		MW	30	17	N	178	45	E	N		1970	6	5
Russia		MW	29	50	N	179	5	E	Y		1970	7	2
Russia		MW	30	16.4	N	178	40	E	Y		1970	7	16
Russia		MW	29	48	N	179	4.8	E	N		1970	7	17
Russia		MW	29	47.9	N	179	6	E	N		1970	7	17
Russia		MW	30	16.4	N	178	42.2	E	N		1970	8	26
Russia		BT	29	49.1	N	179	4	E	Y		1971	5	13
Russia		BT	30	16.7	N	178	41.3	E	N		1971	5	14
Russia		BT	34	54.9	N	171	44.7	E	Y		1969	2	27
Russia		BT	35	5.5	N	171	49	E	Y		1969	2	27
Russia		BT	35	25.4	N	171	31.2	E	N		1969	2	28
Russia		BT	31	56.5	N	173	5.6	E	Y		1969	3	2
Russia		BT	32	2.5	N	173	5.3	E	N		1969	3	2
Russia		BT	32	2.5	N	173	4.9	E	Y		1969	3	2
Russia		BT	32	0	N	173	7.7	E	N		1969	3	3
Russia		BT	31	59	N	173	5	E	Y		1969	3	3
Russia		BT	32	1	N	173	11.5	E	Y		1969	3	15
Russia		BT	32	0.9	N	173	11.5	E	N		1969	3	15
Russia		BT	32	1.1	N	173	10.1	E	N		1969	3	15
Russia		BT	32	4	N	173	10	E	Y		1969	3	15
Russia		BT	32	3.9	N	173	10.1	E	N		1969	3	15
Russia		BT	32	2.8	N	173	11.8	E	Y		1969	3	15
Russia		BT	35	1.9	N	172	1	E	Y		1969	3	21
Russia		BT	35	5	N	171	55.9	E	N		1969	3	21
Russia		BT	34	51.3	N	171	48.5	E	N		1969	3	22
Russia		BT	34	51	N	171	41.7	E	Y		1969	3	22
Russia		BT	34	52.5	N	171	45.4	E	N		1969	4	22
Russia		BT	32	10	N	173	1.5	E	N		1969	4	24
Russia		BT	32	16.5	N	172	48.1	E	Y		1969	4	24
Russia		BT	32	20.5	N	172	37	E	N		1969	4	25
Russia		BT	32	21.5	N	172	36.9	E	N		1969	4	25
Russia		BT	32	16.1	N	172	44.7	E	Y		1969	4	25
Russia		BT	30	59.8	N	175	51	E	Y		1969	4	26
Russia		BT	31	0.6	N	175	55	E	Y		1969	4	27
Russia		BT	30	59.7	N	175	55	E	Y		1969	4	28
Russia		BT	32	4	N	173	10	E	N		1969	5	10
Russia		BT	32	2.5	N	173	8.9	E	Y		1969	5	10
Russia		BT	32	3.3	N	173	10.5	E	N		1969	5	11
Russia		BT	32	3.9	N	173	10	E	Y		1969	5	11
Russia		BT	32	3.9	N	173	10	E	Y		1969	5	11
Russia		BT	32	4.1	N	173	10.5	E	Y		1969	5	12
Russia		BT	32	5.2	N	173	7.8	E	Y		1969	5	12
Russia		BT	32	4	N	173	8.2	E	Y		1969	5	13
Russia		BT	32	3.3	N	173	10.4	E	Y		1969	5	14
Russia		BT	31	3.1	N	175	53	E	N		1969	6	15
Russia		BT	31	2.8	N	175	53.8	E	Y		1969	6	18
Russia		BT	31	2.8	N	175	53.5	E	Y		1969	6	18
Russia		BT	31	59.2	N	173	9.8	E	Y		1969	6	20
Russia		BT	32	2	N	173	6.8	E	N		1969	6	20
Russia		BT	32	1.6	N	173	10	E	N		1969	6	21
Russia		BT	32	1	N	173	9.6	E	N		1969	6	21
Russia		BT	34	58.9	N	171	49.8	E	Y		1969	6	23
Russia		BT	35	4.1	N	171	46.6	E	N		1969	6	23
Russia		BT	35	4.3	N	171	47.3	E	N		1969	6	24
Russia		BT	34	56.5	N	171	52.4	E	N		1969	6	24
Russia		BT	34	56.4	N	171	53.1	E	Y		1969	6	25
Russia		BT	31	5.6	N	175	52.2	E	Y		1969	6	14
Russia		MW	32	21.8	N	172	49.6	E	Y		1970	6	23
Russia		MW	35	14.3	N	171	36.2	E	Y		1970	7	8
Russia		MW	32	16.5	N	172	51.2	E	Y		1970	7	9
Russia		MW	32	17	N	172	53.3	E	N		1970	7	9
Russia		MW	32	4.3	N	173	7.1	E	N		1970	7	10
Russia		MW	32	22	N	172	43.9	E	N		1970	8	21
Russia		MW	32	17.5	N	172	47.2	E	Y		1970	8	22
Russia		MW	31	59.8	N	173	4	E	N		1970	8	22
Russia		MW	32	4	N	173	9.3	E	Y		1970	8	23
Russia		MW	30	23.4	N	177	31.7	E	N		1970	8	25
Russia		MW	32	4.5	N	173	15.5	E	N		1970	9	8
Russia		MW	32	16.9	N	172	43.6	E	N		1970	9	8
Russia		MW	32	16.7	N	172	45.1	E	N		1970	9	8
Russia		MW	32	3.8	N	173	4.9	E	N		1970	9	8
Russia		MW	31	39.5	N	173	6.5	E	Y		1970	9	9
Russia		MW	35	2.6	N	172	1.6	E	Y		1970	9	10
Russia		BT	34	58	N	171	54.6	E	Y		1971	3	3
Russia		BT	32	16.9	N	172	49	E	Y		1971	3	7
Russia		BT	31	58.9	N	173	10	E	Y		1971	3	8
Russia		BT	31	2.7	N	175	53.6	E	Y		1971	3	12
Russia		BT	31	1.6	N	175	53.5	E	Y		1971	3	13
Russia		BT	31	2	N	175	52	E	N		1971	3	13
Russia		BT	31	1.5	N	175	53.3	E	Y		1971	3	13

Country	Vessel Name	Type	Lat1	Lat2	Lat3	Long1	Long2	Long3	Fisheries	Catch	Year	Month	Day
Russia		BT	32	18.2	N	172	49.5	E	N		1971	4	15
Russia		BT	32	15.5	N	172	55	E	N		1971	4	15
Russia		BT	32	1.8	N	173	7	E	N		1971	4	17
Russia		BT	31	1.5	N	175	53	E	Y		1971	5	9
Russia		MW	36	46.6	N	171	27.2	E	N		1985	8	25
Russia		MW	35	3.7	N	171	43	E	N		1985	8	28
Japan	Taiyo Maru No.61	BT	35	4.8	N	171	34.7	E	Y		1973	4	18
Japan	Taiyo Maru No.61	BT	35	6.7	N	171	34.8	E	Y		1973	4	18
Japan	Taiyo Maru No.61	BT	32	39	N	172	17.1	E	Y		1973	4	20
Japan	Taiyo Maru No.61	BT	32	16.3	N	173	3	E	Y		1973	4	20
Japan	Taiyo Maru No.61	BT	32	13	N	172	48	E	Y		1973	4	21
Japan	Taiyo Maru No.61	BT	31	2	N	175	54.3	E	Y		1973	4	26
Japan	Taiyo Maru No.61	BT	30	16	N	178	43.5	E	Y		1973	4	29
Japan	Taiyo Maru No.61	BT	29	47.2	N	179	3.7	E	Y		1973	5	25
Japan	Taiyo Maru No.61	BT	30	14.5	N	178	42.5	E	Y		1973	6	1
Japan	Taiyo Maru No.61	BT	30	15.5	N	178	43.2	E	Y		1973	6	2
Japan	Taiyo Maru No.61	BT	30	15.1	N	178	42.5	E	Y		1973	6	2
Japan	Taiyo Maru No.61	BT	30	23	N	177	31	E	Y		1973	6	6
Japan	Taiyo Maru No.61	BT	29	48.2	N	179	4.3	E	Y		1973	6	11
Japan	Taiyo Maru No.61	BT	29	47	N	179	3.7	E	Y		1973	6	18
Japan	Taiyo Maru No.61	BT	29	47	N	179	3.8	E	N		1973	6	19
Japan	Taiyo Maru No.61	BT	29	47.2	N	179	4.3	E	Y		1973	7	6
Japan	Taiyo Maru No.61	BT	29	47.2	N	179	4.3	E	Y		1973	7	8
Japan	Taiyo Maru No.61	BT	30	47.6	N	179	4.6	E	Y		1973	7	10
Japan	Taiyo Maru No.61	BT	29	47.2	N	179	4.3	E	Y		1973	7	15
Japan	Taiyo Maru No.61	BT	29	47.3	N	179	3.5	E	Y		1973	7	17
Japan	Taiyo Maru No.61	BT	30	14.7	N	178	42	E	Y		1973	7	17
Japan	Taiyo Maru No.61	BT	29	47.6	N	179	4.6	E	N		1973	7	18
Japan	Taiyo Maru No.61	BT	30	14.8	N	178	43.5	E	N		1973	7	19
Japan	Taiyo Maru No.61	BT	29	48.6	N	179	3.5	E	Y		1973	7	19
Japan	Taiyo Maru No.61	BT	30	15.7	N	178	43.2	E	Y		1973	8	20
Japan	Taiyo Maru No.61	BT	29	48.6	N	179	3.9	E	Y		1973	8	24
Japan	Taiyo Maru No.61	BT	29	48	N	179	3.2	E	Y		1973	8	25
Japan	Taiyo Maru No.61	BT	29	48.5	N	179	3.5	E	Y		1973	8	26
Japan	Taiyo Maru No.61	BT	29	48.4	N	179	3.5	E	Y		1973	8	29
Japan	Taiyo Maru No.61	BT	29	48.6	N	179	3.8	E	Y		1973	8	31
Japan	Taiyo Maru No.61	BT	30	15.8	N	178	43.3	E	Y		1973	9	1
Japan	Taiyo Maru No.61	BT	30	15.1	N	178	42.5	E	Y		1973	9	2
Japan	Taiyo Maru No.61	BT	30	15.4	N	178	42.5	E	Y		1973	9	3
Japan	Taiyo Maru No.61	BT	31	1.3	N	175	53.5	E	N		1973	9	7
Japan	Taiyo Maru No.61	BT	31	8	N	175	53.4	E	N		1973	9	7
Japan	Taiyo Maru No.61	BT	32	12.8	N	172	51	E	N		1973	9	8
Japan	Taiyo Maru No.61	BT	31	1.4	N	175	54	E	Y		1973	9	10
Japan	Taiyo Maru No.61	BT	31	1	N	175	55.5	E	Y		1973	9	10
Japan	Taiyo Maru No.61	BT	30	15.7	N	178	43.3	E	Y		1973	9	13
Japan	Taiyo Maru No.61	BT	30	15.2	N	178	42.5	E	Y		1973	9	13
Japan	Taiyo Maru No.61	BT	30	16.2	N	178	43.2	E	Y		1973	9	14
Japan	Taiyo Maru No.61	BT	30	15.6	N	178	43.3	E	Y		1973	9	15
Japan	Taiyo Maru No.61	BT	30	15.6	N	178	43.3	E	Y		1973	9	17
Japan	Taiyo Maru No.61	BT	29	47.4	N	179	4.3	E	N		1973	9	18
Japan	Taiyo Maru No.61	BT	30	15.7	N	178	43.3	E	N		1973	9	18
Japan	Taiyo Maru No.61	BT	29	48.3	N	179	4.2	E	N		1973	10	5
Japan	Taiyo Maru No.61	BT	30	15.7	N	178	43.2	E	Y		1973	10	5
Japan	Taiyo Maru No.61	BT	30	15.7	N	178	43.2	E	Y		1973	10	6
Japan	Taiyo Maru No.61	BT	30	15.6	N	178	43.4	E	Y		1973	10	9
Japan	Taiyo Maru No.61	BT	30	15.7	N	178	43.2	E	N		1973	10	12
Japan	Taiyo Maru No.61	BT	30	15.7	N	178	43.4	E	Y		1973	10	14
Japan	Taiyo Maru No.61	BT	30	15.8	N	178	43.2	E	N		1973	10	14
Japan	Taiyo Maru No.61	BT	30	15.7	N	178	43.4	E	Y		1973	10	14
Japan	Taiyo Maru No.61	BT	32	29	N	172	17.5	E	N		1973	10	19
Japan	Taiyo Maru No.61	BT	32	29	N	172	17	E	Y		1973	10	19
Japan	Taiyo Maru No.61	BT	32	29.4	N	172	17.7	E	Y		1973	10	20
Japan	Taiyo Maru No.61	BT	32	29	N	172	17.1	E	N		1973	10	20
Japan	Taiyo Maru No.61	BT	31	1	N	175	54.5	E	Y		1973	10	22
Japan	Taiyo Maru No.61	BT	31	1	N	175	53.3	E	N		1973	10	23
Japan	Taiyo Maru No.61	BT	31	1.3	N	175	53.8	E	Y		1973	10	24
Japan	Taiyo Maru No.61	BT	31	1.3	N	175	54	E	N		1973	10	24
Japan	Taiyo Maru No.61	BT	31	0.5	N	175	53.7	E	Y		1973	10	24
Japan	Taiyo Maru No.61	BT	31	0.7	N	175	53.6	E	N		1973	10	25
Japan	Taiyo Maru No.61	BT	31	1.4	N	175	54	E	Y		1973	10	26
Japan	Taiyo Maru No.61	BT	31	1.3	N	175	53.7	E	N		1973	10	26
Japan	Taiyo Maru No.61	BT	31	1.3	N	175	53.6	E	Y		1973	10	26
Japan	Taiyo Maru No.61	BT	31	1.4	N	175	53.7	E	Y		1973	10	27
Japan	Taiyo Maru No.61	BT	31	1	N	175	53.7	E	Y		1973	10	28
Japan	Taiyo Maru No.61	BT	30	15.7	N	178	42.5	E	Y		1973	10	31
Japan	Taiyo Maru No.61	BT	30	15.8	N	178	42.5	E	Y		1973	11	1
Japan	Taiyo Maru No.61	BT	30	15.7	N	178	42.7	E	N		1973	11	2
Japan	Taiyo Maru No.61	BT	30	15.6	N	178	42.7	E	N		1973	11	2
Japan	Taiyo Maru No.61	BT	30	15.8	N	178	42.9	E	Y		1973	11	2
Japan	Taiyo Maru No.61	BT	29	48	N	179	3.4	E	Y		1973	11	4
Japan	Taiyo Maru No.61	BT	29	47.4	N	179	4	E	N		1973	11	30
Japan	Taiyo Maru No.61	BT	30	15.4	N	178	43.3	E	N		1973	12	1
Japan	Taiyo Maru No.61	BT	30	16	N	178	43.2	E	Y		1973	12	1
Japan	Taiyo Maru No.61	BT	30	15.7	N	178	43.3	E	N		1973	12	2
Japan	Taiyo Maru No.61	BT	30	15.5	N	178	43.4	E	Y		1973	12	8

Country	Vessel Name	Type	Lat1	Lat2	Lat3	Long1	Long2	Long3	Fisheries	Catch	Year	Month	Day
Japan	Taiyo Maru No.61	BT	30	15.7	N	178	43.3	E	N		1973	12	8
Japan	Taiyo Maru No.61	BT	31	0.9	N	175	53.7	E	N		1973	12	10
Japan	Taiyo Maru No.61	BT	31	0.5	N	175	53.7	E	Y		1973	12	10
Japan	Taiyo Maru No.61	BT	30	14.9	N	172	42	E	N		1973	12	11
Japan	Taiyo Maru No.61	BT	30	15	N	172	42	E	Y		1973	12	11
Japan	Taiyo Maru No.61	BT	32	13	N	172	51.5	E	N		1973	12	11
Japan	Taiyo Maru No.61	BT	33	13.5	N	172	51	E	Y		1973	12	12
Japan	Taiyo Maru No.61	BT	35	23	N	171	19.5	E	Y		1972	5	13
Japan	Taiyo Maru No.61	BT	35	16.5	N	171	43.5	E	Y		1972	5	14
Japan	Taiyo Maru No.61	BT	32	16	N	171	43	E	Y		1972	5	14
Japan	Taiyo Maru No.61	BT	32	11.5	N	172	15	E	N		1972	5	15
Japan	Taiyo Maru No.61	BT	32	13.8	N	172	50.5	E	N		1972	5	16
Japan	Taiyo Maru No.61	BT	32	13	N	172	51	E	Y		1972	5	16
Japan	Taiyo Maru No.61	BT	32	44	N	172	13	E	N		1972	5	17
Japan	Taiyo Maru No.61	BT	32	11.3	N	172	13.5	E	N		1972	5	17
Japan	Taiyo Maru No.61	BT	32	37.5	N	172	11.8	E	N		1972	5	17
Japan	Taiyo Maru No.61	BT	32	40	N	172	12	E	Y		1972	5	18
Japan	Taiyo Maru No.61	BT	32	44.2	N	172	12.5	E	N		1972	5	18
Japan	Taiyo Maru No.61	BT	32	39.5	N	172	12	E	N		1972	5	19
Japan	Taiyo Maru No.61	BT	32	36.8	N	172	10.8	E	N		1972	5	20
Japan	Taiyo Maru No.61	BT	32	40	N	172	16.5	E	Y		1972	5	21
Japan	Taiyo Maru No.61	BT	32	39.5	N	172	17	E	N		1972	5	21
Japan	Taiyo Maru No.61	BT	32	39.5	N	172	17	E	Y		1972	5	21
Japan	Taiyo Maru No.61	BT	32	39.2	N	172	17.1	E	Y		1972	5	22
Japan	Taiyo Maru No.61	BT	32	39.4	N	172	17	E	Y		1972	5	24
Japan	Taiyo Maru No.61	BT	32	41	N	172	16	E	N		1972	5	25
Japan	Taiyo Maru No.61	BT	32	39.5	N	172	16.6	E	N		1972	5	25
Japan	Taiyo Maru No.61	BT	32	40	N	172	16	E	Y		1972	5	26
Japan	Taiyo Maru No.61	BT	32	39.4	N	172	16.8	E	N		1972	5	26
Japan	Taiyo Maru No.61	BT	32	41	N	172	16	E	Y		1972	5	26
Japan	Taiyo Maru No.61	BT	32	40	N	172	16	E	N		1972	5	26
Japan	Taiyo Maru No.61	BT	31	1.5	N	175	54.5	E	N		1972	5	28
Japan	Taiyo Maru No.61	BT	29	47	N	179	2.5	E	Y		1972	6	5
Japan	Taiyo Maru No.61	BT	29	47.2	N	179	3.4	E	N		1972	6	7
Japan	Taiyo Maru No.61	BT	29	47.5	N	179	2	E	Y		1972	6	8
Japan	Taiyo Maru No.61	BT	29	47.4	N	179	3	E	Y		1972	6	9
Japan	Taiyo Maru No.61	BT	28	54.3	N	179	37	W	N		1972	6	13
Japan	Taiyo Maru No.61	BT	28	54.2	N	179	36.8	W	Y		1972	6	13
Japan	Taiyo Maru No.61	BT	26	53.7	N	176	27.5	W	N		1972	6	15
Japan	Taiyo Maru No.61	BT	26	56.1	N	176	24.7	W	N		1972	6	15
Japan	Taiyo Maru No.61	BT	26	54.9	N	176	26.7	W	N		1972	6	15
Japan	Taiyo Maru No.61	BT	26	58	N	176	24.6	W	N		1972	6	15
Japan	Taiyo Maru No.61	BT	26	59.5	N	175	35.5	W	N		1972	6	16
Japan	Taiyo Maru No.61	BT	26	59	N	175	35.5	W	N		1972	6	16
Japan	Taiyo Maru No.61	BT	26	18	N	174	37.5	W	N		1972	6	17
Japan	Taiyo Maru No.61	BT	26	18.5	N	174	37	W	Y		1972	6	17
Japan	Taiyo Maru No.61	BT	26	19	N	174	35.8	W	Y		1972	6	17
Japan	Taiyo Maru No.61	BT	26	16.9	N	174	38.6	W	Y		1972	6	17
Japan	Taiyo Maru No.61	BT	26	19.2	N	174	32.3	W	Y		1972	6	18
Japan	Taiyo Maru No.61	BT	26	19.3	N	174	33.8	W	Y		1972	6	18
Japan	Taiyo Maru No.61	BT	26	17.1	N	174	36.5	W	Y		1972	6	18
Japan	Taiyo Maru No.61	BT	26	16.8	N	174	34.4	W	Y		1972	6	18
Japan	Taiyo Maru No.61	BT	25	19.5	N	172	15	W	N		1972	7	1
Japan	Taiyo Maru No.61	BT	26	18	N	174	31.1	W	N		1972	7	2
Japan	Taiyo Maru No.61	BT	26	18.4	N	174	34.2	W	Y		1972	7	2
Japan	Taiyo Maru No.61	BT	26	19.3	N	174	32.5	W	Y		1972	7	2
Japan	Taiyo Maru No.61	BT	26	17.5	N	174	34.4	W	Y		1972	7	2
Japan	Taiyo Maru No.61	BT	26	19.6	N	174	32.5	W	Y		1972	7	3
Japan	Taiyo Maru No.61	BT	26	16.7	N	174	34.2	W	N		1972	7	3
Japan	Taiyo Maru No.61	BT	28	56.8	N	178	40.4	W	Y		1972	7	4
Japan	Taiyo Maru No.61	BT	28	57	N	178	41	W	Y		1972	7	5
Japan	Taiyo Maru No.61	BT	28	57	N	178	40.3	W	Y		1972	7	5
Japan	Taiyo Maru No.61	BT	29	47.7	N	179	3.2	E	Y		1972	7	5
Japan	Taiyo Maru No.61	BT	29	48.1	N	179	3.7	E	N		1972	7	22
Japan	Taiyo Maru No.61	BT	22	46.6	N	161	1	W	N		1972	8	2
Japan	Taiyo Maru No.61	BT	22	42	N	160	59.5	W	Y		1972	8	2
Japan	Taiyo Maru No.61	BT	22	41	N	161	3	W	N		1972	8	2
Japan	Taiyo Maru No.61	BT	25	39.8	N	169	23.6	W	Y		1972	8	10
Japan	Taiyo Maru No.61	BT	25	39	N	169	22.5	W	N		1972	8	10
Japan	Taiyo Maru No.61	BT	25	39.4	N	169	23.2	W	Y		1972	8	10
Japan	Taiyo Maru No.61	BT	28	55	N	179	37	W	Y		1972	8	13
Japan	Taiyo Maru No.61	BT	28	53.5	N	179	37.5	W	Y		1972	8	13
Japan	Taiyo Maru No.61	BT	29	47.3	N	179	3.7	E	Y		1972	8	14
Japan	Taiyo Maru No.61	BT	29	47.8	N	179	3.4	E	N		1972	8	15
Japan	Taiyo Maru No.61	BT	29	48.7	N	179	3.6	E	Y		1972	8	16
Japan	Taiyo Maru No.61	BT	31	1	N	175	54.5	E	Y		1972	8	17
Japan	Taiyo Maru No.61	BT	31	1.2	N	175	54.1	E	Y		1972	8	17
Japan	Taiyo Maru No.61	BT	31	1	N	175	54.5	E	Y		1972	8	17
Japan	Taiyo Maru No.61	BT	31	0.7	N	175	54.3	E	Y		1972	8	17
Japan	Taiyo Maru No.61	BT	31	1.3	N	175	54.2	E	N		1972	8	18
Japan	Taiyo Maru No.61	BT	32	36.8	N	172	17	E	N		1972	8	21
Japan	Taiyo Maru No.61	BT	32	38.3	N	172	17.2	E	Y		1972	8	21
Japan	Taiyo Maru No.61	BT	32	12.4	N	172	52.7	E	Y		1972	8	21
Japan	Taiyo Maru No.61	BT	32	13.9	N	172	58	E	Y		1972	8	21
Japan	Taiyo Maru No.61	BT	32	12.5	N	172	52.8	E	Y		1972	8	22

Country	Vessel Name	Type	Lat1	Lat2	Lat3	Long1	Long2	Long3	Fisheries	Catch	Year	Month	Day
Japan	Taiyo Maru No.61	BT	32	13.9	N	172	50.1	E	N		1972	8	25
Japan	Taiyo Maru No.61	BT	32	14.2	N	172	49.3	E	Y		1972	8	25
Japan	Taiyo Maru No.61	BT	32	15.3	N	172	48.5	E	Y		1972	8	25
Japan	Taiyo Maru No.61	BT	32	15.2	N	172	40.6	E	Y		1972	9	28
Japan	Taiyo Maru No.61	BT	32	16.1	N	172	48.8	E	Y		1972	9	28
Japan	Taiyo Maru No.61	BT	31	1.1	N	175	53.2	E	Y		1972	9	30
Japan	Taiyo Maru No.61	BT	31	1.5	N	175	54.5	E	N		1972	10	1
Japan	Taiyo Maru No.61	BT	31	1.5	N	175	54.2	E	Y		1972	10	1
Japan	Taiyo Maru No.61	BT	30	15.5	N	178	43	E	N		1972	10	2
Japan	Taiyo Maru No.61	BT	30	15.4	N	178	43.7	E	N		1972	10	2
Japan	Taiyo Maru No.61	BT	30	15.5	N	178	43	E	Y		1972	10	2
Japan	Taiyo Maru No.61	BT	30	15.8	N	178	43	E	Y		1972	10	4
Japan	Taiyo Maru No.61	BT	30	15.8	N	178	43.1	E	N		1972	10	5
Japan	Taiyo Maru No.61	BT	30	15.4	N	178	42.9	E	N		1972	10	5
Japan	Taiyo Maru No.61	BT	30	15.6	N	178	43.2	E	N		1972	10	5
Japan	Taiyo Maru No.61	BT	30	15.8	N	178	43	E	Y		1972	10	5
Japan	Taiyo Maru No.61	BT	29	48.5	N	179	3.1	E	N		1972	10	7
Japan	Taiyo Maru No.61	BT	29	48	N	179	4.4	E	N		1972	10	7
Japan	Taiyo Maru No.61	BT	30	15.5	N	178	43	E	Y		1972	10	11
Japan	Taiyo Maru No.61	BT	30	15.8	N	178	42.5	E	Y		1972	10	11
Japan	Taiyo Maru No.61	BT	30	15.8	N	178	43.1	E	Y		1972	10	12
Japan	Taiyo Maru No.61	BT	30	15.8	N	178	49.1	E	Y		1972	10	12
Japan	Taiyo Maru No.61	BT	30	15.7	N	178	43.1	E	Y		1972	10	13
Japan	Taiyo Maru No.61	BT	30	15.9	N	178	43	E	Y		1972	10	14
Japan	Taiyo Maru No.61	BT	31	2.1	N	175	54.8	E	Y		1972	10	15
Japan	Taiyo Maru No.61	BT	31	2.2	N	175	55.3	E	Y		1972	10	16
Japan	Taiyo Maru No.61	BT	31	0.9	N	175	54.5	E	Y		1972	10	17
Japan	Taiyo Maru No.61	BT	31	2.1	N	175	55.3	E	Y		1972	10	17
Japan	Taiyo Maru No.61	BT	31	1.5	N	175	54.6	E	Y		1972	10	18
Japan	Taiyo Maru No.61	BT	31	57	N	173	6	E	N		1972	10	19
Japan	Taiyo Maru No.61	BT	32	14.7	N	172	47.1	E	Y		1972	10	19
Japan	Taiyo Maru No.61	BT	32	13.8	N	172	47	E	Y		1972	10	19
Japan	Taiyo Maru No.61	BT	32	16	N	172	47.5	E	Y		1972	10	20
Japan	Taiyo Maru No.61	BT	32	13.8	N	172	48.5	E	N		1972	10	20
Japan	Taiyo Maru No.61	BT	32	14.5	N	172	50.7	E	Y		1972	10	21
Japan	Taiyo Maru No.61	BT	32	16.1	N	172	48.8	E	Y		1972	10	21
Japan	Taiyo Maru No.61	BT	31	1.3	N	175	53.7	E	Y		1972	10	22
Japan	Taiyo Maru No.61	BT	31	1.8	N	175	54.6	E	Y		1972	10	22
Japan	Taiyo Maru No.61	BT	31	2.1	N	175	54.7	E	Y		1972	10	22
Japan	Taiyo Maru No.61	BT	31	1.9	N	175	54.8	E	Y		1972	10	23
Japan	Taiyo Maru No.61	BT	31	1.8	N	175	54.8	E	Y		1972	10	23
Japan	Taiyo Maru No.61	BT	31	1.7	N	175	54.6	E	N		1972	10	23
Japan	Taiyo Maru No.61	BT	31	1.7	N	175	54.2	E	Y		1972	10	23
Japan	Taiyo Maru No.61	BT	31	2	N	175	54.8	E	Y		1972	10	24
Japan	Taiyo Maru No.61	BT	30	15.8	N	178	43	E	Y		1972	10	25
Japan	Taiyo Maru No.61	BT	30	15.6	N	178	43.2	E	Y		1972	10	27
Japan	Taiyo Maru No.61	BT	29	47.8	N	179	4.4	E	Y		1972	10	28
Japan	Taiyo Maru No.61	BT	26	18.9	N	174	33.6	W	N		1972	10	31
Japan	Taiyo Maru No.61	BT	26	18.3	N	174	33.7	W	Y		1972	10	31
Japan	Taiyo Maru No.61	BT	26	20.3	N	174	30.3	W	Y		1972	11	1
Japan	Taiyo Maru No.61	BT	26	20.1	N	174	30.2	W	Y		1972	11	1
Japan	Taiyo Maru No.61	BT	29	48.1	N	179	4	E	N		1972	11	18
Japan	Taiyo Maru No.61	BT	31	1.9	N	175	54.7	E	Y		1972	11	24
Japan	Taiyo Maru No.61	BT	31	1.7	N	175	54.6	E	Y		1972	11	25
Japan	Taiyo Maru No.61	BT	31	1.6	N	175	54.3	E	Y		1972	11	25
Japan	Taiyo Maru No.61	BT	31	1.5	N	178	54.7	E	Y		1972	11	25
Japan	Taiyo Maru No.61	BT	31	1.8	N	175	54.6	E	Y		1972	11	25
Japan	Taiyo Maru No.61	BT	31	1.9	N	178	55	E	N		1972	11	26
Japan	Taiyo Maru No.61	BT	31	1.3	N	175	54.7	E	Y		1972	11	26
Japan	Taiyo Maru No.61	BT	31	0.4	N	175	54.2	E	Y		1972	11	27
Japan	Taiyo Maru No.61	BT	31	0.5	N	175	54.2	E	Y		1972	11	27
Japan	Taiyo Maru No.61	BT	31	0.5	N	175	53.5	E	Y		1972	11	27
Japan	Taiyo Maru No.61	BT	32	15	N	172	51.5	E	N		1972	11	29
Japan	Taiyo Maru No.61	BT	32	15.4	N	172	48.4	E	Y		1972	11	29
Japan	Taiyo Maru No.61	BT	31	58	N	173	5.1	E	N		1972	11	30
Japan	Taiyo Maru No.61	BT	31	0.4	N	175	54.5	E	N		1972	12	1
Japan	Taiyo Maru No.61	BT	31	1.2	N	175	54.2	E	N		1972	12	1
Japan	Taiyo Maru No.61	BT	31	1.9	N	175	54.8	E	Y		1972	12	1
Japan	Taiyo Maru No.61	BT	31	1	N	175	54.2	E	Y		1972	12	1
Japan	Taiyo Maru No.61	BT	31	1.2	N	175	54	E	Y		1972	12	1
Japan	Taiyo Maru No.61	BT	31	1.1	N	175	53.8	E	Y		1972	12	1
Japan	Taiyo Maru No.61	BT	31	2	N	175	54.5	E	Y		1972	12	1
Japan	Taiyo Maru No.61	BT	31	1.9	N	175	54.6	E	Y		1972	12	2
Japan	Taiyo Maru No.61	BT	31	1.7	N	175	54.5	E	N		1972	12	2
Japan	Taiyo Maru No.61	BT	31	1.9	N	175	54.4	E	N		1972	12	2
Japan	Taiyo Maru No.61	BT	31	0.4	N	175	53.6	E	Y		1972	12	2
Japan	Taiyo Maru No.61	BT	31	0.5	N	175	54.1	E	N		1972	12	2
Japan	Taiyo Maru No.61	BT	30	20	N	178	43.1	E	Y		1972	12	3
Japan	Taiyo Maru No.61	BT	30	15.2	N	178	42.7	E	N		1972	12	3
Japan	Taiyo Maru No.61	BT	30	15.4	N	178	43	E	Y		1972	12	4
Japan	Taiyo Maru No.61	BT	30	15.3	N	178	42.5	E	Y		1972	12	5
Japan	Taiyo Maru No.61	BT	30	15.5	N	178	42.5	E	Y		1972	12	5
Japan	Taiyo Maru No.61	BT	30	15.5	N	178	42.6	E	N		1972	12	6
Japan	Taiyo Maru No.61	BT	29	47.7	N	179	4.7	E	Y		1972	12	10
Japan	Taiyo Maru No.61	BT	29	47.5	N	179	4.5	E	Y		1972	12	11

Country	Vessel Name	Type	Lat1	Lat2	Lat3	Long1	Long2	Long3	Fisheries	Catch	Year	Month	Day
Japan	Taiyo Maru No.61	BT	29	47.6	N	179	4.6	E	N		1972	12	11
Japan	Taiyo Maru No.61	BT	31	1.6	N	175	55.3	E	Y		1973	1	5
Japan	Taiyo Maru No.61	BT	31	2	N	175	55.2	E	Y		1973	1	5
Japan	Taiyo Maru No.61	BT	31	1.7	N	175	54.8	E	Y		1973	1	6
Japan	Taiyo Maru No.61	BT	31	1.3	N	175	54	E	Y		1973	1	7
Japan	Taiyo Maru No.61	BT	31	1.8	N	175	5	E	Y		1973	1	7
Japan	Taiyo Maru No.61	BT	31	1.4	N	175	55.1	E	Y		1973	1	7
Japan	Taiyo Maru No.61	BT	31	0.2	N	175	52.4	E	Y		1973	1	7
Japan	Taiyo Maru No.61	BT	31	1	N	175	53.5	E	Y		1973	1	7
Japan	Taiyo Maru No.61	BT	31	1.2	N	175	52.4	E	Y		1973	1	7
Japan	Taiyo Maru No.61	BT	31	1	N	175	53.4	E	Y		1973	1	7
Japan	Taiyo Maru No.61	BT	31	1.4	N	175	4	E	Y		1973	1	8
Japan	Taiyo Maru No.61	BT	31	1.8	N	175	53.3	E	Y		1973	1	8
Japan	Taiyo Maru No.61	BT	31	1.4	N	175	54.4	E	N		1973	1	8
Japan	Taiyo Maru No.61	BT	31	1.3	N	175	54.3	E	Y		1973	1	8
Japan	Taiyo Maru No.61	BT	31	7.1	N	175	52.6	E	Y		1973	1	8
Japan	Taiyo Maru No.61	BT	32	50.4	N	172	50.4	E	Y		1973	1	11
Japan	Taiyo Maru No.61	BT	32	12.8	N	172	52.3	E	Y		1973	1	12
Japan	Taiyo Maru No.61	BT	32	18.8	N	172	51	E	Y		1973	1	12
Japan	RV Kaiyo Maru	BT	32	4.9	N	173	0.6	E	Y		1972	12	7
Japan	RV Kaiyo Maru	BT	32	12.1	N	172	50.5	E	Y		1972	12	8
Japan	Chiyoki Maru	BT	31	37.9	N	173	08.7	E	N		1976	8	7
Japan	Chiyoki Maru	BT	31	54.6	N	173	09.4	E	Y		1976	8	8
Japan	Chiyoki Maru	BT	31	55.3	N	173	07.5	E	N		1976	8	8
Japan	Chiyoki Maru	BT	31	56.1	N	173	10.1	E	Y		1976	8	8
Japan	Chiyoki Maru	BT	31	56.4	N	173	10.4	E	Y		1976	8	7
Japan	Chiyoki Maru	BT	32	14.5	N	172	53.4	E	N		1976	8	6
Japan	Chiyoki Maru	BT	32	04.8	N	173	04.5	E	N		1976	8	7
Japan	Chiyoki Maru	BT	32	11.9	N	172	53.5	E	N		1976	8	7
Japan	Chiyoki Maru	BT	32	12.5	N	172	55.2	E	Y		1976	8	7
Japan	Chiyoki Maru	BT	32	12.6	N	172	54.0	E	N		1976	8	6
Japan	Chiyoki Maru	BT	32	13.2	N	172	52.0	E	N		1976	8	7
Japan	Chiyoki Maru	BT	32	14.7	N	172	52.8	E	N		1976	8	9
Japan	Chiyoki Maru	BT	32	16.9	N	172	48.9	E	N		1976	8	9
Japan	Chiyoki Maru	BT	32	17.5	N	172	52.1	E	N		1976	8	6
Japan	Chiyoki Maru	BT	32	19.5	N	172	52.7	E	N		1976	8	6
Japan	Chiyoki Maru	BT	32	45.2	N	172	45.9	E	N		1976	8	6
Japan	Chiyoki Maru	BT	34	53.8	N	171	54.3	E	Y		1976	8	1
Japan	Chiyoki Maru	BT	34	56.1	N	171	44.8	E	N		1976	8	5
Japan	Chiyoki Maru	BT	34	57.3	N	171	56.9	E	N		1976	8	1
Japan	Chiyoki Maru	BT	34	57.7	N	171	44.0	E	N		1976	8	5
Japan	Chiyoki Maru	BT	34	59.4	N	171	47.9	E	N		1976	8	5
Japan	Chiyoki Maru	BT	35	04.6	N	171	46.8	E	Y		1976	8	4
Japan	Chiyoki Maru	BT	35	07.7	N	171	38.4	E	N		1976	8	12
Japan	Chiyoki Maru	BT	35	10.4	N	171	47.0	E	N		1976	8	5
Japan	Chiyoki Maru	BT	35	11.3	N	171	40.1	E	Y		1976	8	11
Japan	Chiyoki Maru	BT	35	12.4	N	171	17.3	E	N		1976	8	11
Japan	Chiyoki Maru	BT	35	12.7	N	171	39.9	E	Y		1976	8	4
Japan	Chiyoki Maru	BT	35	12.9	N	171	42.4	E	Y		1976	8	4
Japan	Chiyoki Maru	BT	35	13.7	N	171	42.0	E	Y		1976	8	11
Japan	Chiyoki Maru	BT	35	15.4	N	171	43.6	E	Y		1976	8	11
Japan	Chiyoki Maru	BT	35	16.0	N	171	45.0	E	Y		1976	8	11
Japan	Chiyoki Maru	BT	35	17.3	N	171	37.8	E	Y		1976	8	12
Japan	Chiyoki Maru	BT	35	22.1	N	171	49.7	E	Y		1976	8	4
Japan	Chiyoki Maru	BT	35	22.8	N	171	48.9	E	Y		1976	8	4
Japan	Chiyoki Maru	BT	35	26.2	N	171	45.5	E	Y		1976	8	4
Japan	Chiyoki Maru	BT	35	27.7	N	171	42.4	E	Y		1976	8	4
Japan	Chiyoki Maru	BT	38	46.0	N	171	07.0	E	N		1976	8	1
Japan	Chiyoki Maru	BT	42	16.3	N	170	24.4	E	Y		1976	7	30
Japan	Chiyoki Maru	BT	42	23.6	N	170	23.1	E	N		1976	7	3
Japan	Chiyoki Maru	BT	42	23.7	N	170	23.3	E	Y		1976	7	3
Japan	Koushin Maru No.15	BT	35	19.5	N	171	47.7	E	Y		1977	7	31
Japan	Koushin Maru No.15	BT	35	21.5	N	171	46.0	E	Y		1977	8	1
Japan	Koushin Maru No.15	BT	35	21.2	N	171	46.9	E	N		1977	8	1
Japan	Koushin Maru No.15	BT	35	04.2	N	171	41.8	E	Y		1977	8	2
Japan	Koushin Maru No.15	BT	35	20.0	N	171	46.3	E	Y		1977	8	2
Japan	Koushin Maru No.15	BT	34	57.2	N	171	56.7	E	Y		1977	8	3
Japan	Koushin Maru No.15	BT	35	21.2	N	171	46.9	E	Y		1977	8	3
Japan	Koushin Maru No.15	BT	35	18.4	N	171	41.8	E	N		1977	8	4
Japan	Koushin Maru No.15	BT	38	43.2	N	171	09.9	E	N		1977	8	5
Japan	Koushin Maru No.15	BT	44	33.5	N	170	13.4	E	N		1977	8	9
Japan	Koushin Maru No.15	BT	44	34.0	N	170	12.0	E	N		1977	8	10
Japan	RV Hokuyou Maru	BT	35	26	N	171	25	E	Y		1976	8	8
Japan	RV Hokuyou Maru	BT	35	24	N	171	42	E	Y		1976	8	9
Japan	RV Hokuyou Maru	BT	35	26	N	171	30	E	Y		1976	8	9
Japan	RV Hokuyou Maru	BT	35	22	N	171	27	E	Y		1976	8	9
Japan	RV Hokuyou Maru	BT	34	55	N	171	48	E	Y		1976	8	1
Japan	RV Hokuyou Maru	BT	34	56	N	171	58	E	Y		1976	8	10
Japan	RV Hokuyou Maru	BT	35	5	N	171	44	E	Y		1976	8	11
Japan	Yahata Maru No.30	BT	41	10	N	170	30	E	N		1976	8	13
Japan	Yahata Maru No.30	BT	35	16	N	171	22	E	N		1976	8	15
Japan	Yahata Maru No.30	BT	35	15	N	171	50	E	N		1976	8	15
Japan	Yahata Maru No.30	BT	35	5	N	171	45	E	N		1976	8	15
Japan	Yahata Maru No.30	BT	32	53	N	171	56	E	N		1976	8	16
Japan	Yahata Maru No.30	BT	32	51	N	171	56	E	N		1976	8	16

Country	Vessel Name	Type	Lat1	Lat2	Lat3	Long1	Long2	Long3	Fisheries	Catch	Year	Month	Day
Japan	Yahata Maru No.30	BT	32	52	N	171	56	E	N		1976	8	16
Japan	Yahata Maru No.30	BT	32	52	N	171	57	E	N		1976	8	16
Japan	Yahata Maru No.30	BT	32	50	N	171	55	E	Y		1976	8	17
Japan	Yahata Maru No.30	BT	32	50	N	171	57	E	Y		1976	8	17
Japan	Yahata Maru No.30	BT	32	51	N	171	57	E	Y		1976	8	17
Japan	Yahata Maru No.30	BT	32	49	N	171	56	E	Y		1976	8	17
Japan	Yahata Maru No.30	BT	32	49	N	171	57	E	Y		1976	8	17
Japan	Yahata Maru No.30	BT	32	48	N	171	56	E	Y		1976	8	18
Japan	Yahata Maru No.30	BT	32	47	N	171	57	E	N		1976	8	18
Japan	Yahata Maru No.30	BT	32	48	N	171	57	E	Y		1976	8	18
Japan	Yahata Maru No.30	BT	32	52	N	171	58	E	Y		1976	8	18
Japan	Yahata Maru No.30	BT	32	50	N	171	58	E	N		1976	8	18
Japan	Yahata Maru No.30	BT	32	50	N	171	56	E	N		1976	8	18
Japan	Yahata Maru No.30	BT	32	52	N	171	57	E	N		1976	8	18
Japan	Yahata Maru No.30	BT	34	54	N	171	38	E	N		1976	8	20
Japan	Yahata Maru No.30	BT	35	25	N	171	27	E	N		1976	8	21
Japan	Yahata Maru No.30	BT	35	26	N	171	26	E	N		1976	8	21
Japan	Yahata Maru No.30	BT	35	25	N	171	31	E	N		1976	8	21
Japan	Yahata Maru No.30	BT	35	24	N	171	27	E	N		1976	8	21
Japan	Yahata Maru No.30	BT	35	28	N	171	23	E	N		1976	8	21
Japan	Yahata Maru No.30	BT	35	28	N	171	24	E	N		1976	8	21
Japan	Yahata Maru No.30	BT	35	21	N	171	32	E	N		1976	8	21
Japan	RV Hokuyou Maru	BT	35	04	N	171	42	E	Y		1977	6	13
Japan	RV Hokuyou Maru	BT	35	15	N	171	32	E	Y		1977	6	13
Japan	RV Hokuyou Maru	BT	35	13	N	171	33	E	Y		1977	6	14
Japan	RV Hokuyou Maru	BT	35	08	N	171	33	E	N		1977	6	14
Japan	Tomi Maru No.58	BT	31	0	N	175	52	E	Y		2004	7	12
Japan	Tomi Maru No.58	BT	31	1	N	175	54	E	Y		2004	7	11
Japan	Tomi Maru No.58	BT	31	1	N	175	54	E	Y		2004	7	11
Japan	Tomi Maru No.58	BT	31	1	N	175	52	E	Y		2004	7	11
Japan	Tomi Maru No.58	BT	31	1	N	175	52	E	Y		2004	7	12
Japan	Tomi Maru No.58	BT	31	1	N	175	52	E	Y		2004	7	13
Japan	Tomi Maru No.58	BT	31	2	N	175	54	E	Y		2004	7	12
Japan	Tomi Maru No.58	BT	31	2	N	175	54	E	Y		2004	7	15
Japan	Tomi Maru No.58	BT	32	1	N	173	5	E	Y		2004	6	22
Japan	Tomi Maru No.58	BT	32	5	N	173	3	E	Y		2004	6	22
Japan	Tomi Maru No.58	BT	32	40	N	172	16	E	Y		2004	7	18
Japan	Tomi Maru No.58	BT	34	53	N	171	50	E	Y		2004	6	23
Japan	Tomi Maru No.58	BT	34	57	N	171	49	E	Y		2004	7	6
Japan	Tomi Maru No.58	BT	35	2	N	171	46	E	Y		2004	7	6
Japan	Tomi Maru No.58	BT	35	39	N	171	1	E	Y		2004	7	5
Japan	Tomi Maru No.58	BT	32	4	N	173	7	E	Y		2005	9	26
Japan	Tomi Maru No.58	BT	32	21	N	172	50	E	N		2006	10	23
Japan	Tomi Maru No.58	BT	32	6	N	173	3	E	Y		2006	10	29
Japan	Tomi Maru No.58	BT	35	15	N	171	28	E	Y		2007	7	24
Japan	Tomi Maru No.58	BT	35	18	N	171	21	E	Y		2007	7	20
Japan	Tomi Maru No.58	BT	35	30	N	171	24	E	Y		2007	7	24